



PRODUCT GUIDE



SRS
G R O U P

step ahead

| SRS Group s.r.o.
Rybnicna 36/D
831 07 Bratislava
Slovak Republic

| www.srs-group.com
sales@srs-group.com
phone: +421 2 4468 1417
fax: +421 2 4468 1419

| The value of experience can be understood only when it is gained. It influences people, their decisions, it opens doors to new solutions and gives the ability to make something new and progressive.



Robert Sloboda

GLOSSARY



SRS GENERATOR™ TECHNOLOGY

SRS Generator is a technology that uses a unique module which makes it possible to run the dimming devices even on generators that do not have stable frequency output. The result is smooth dimming without any fuzziness.



SRS THERMAL™ MANAGEMENT

SRS devices are 100% duty cycle rated – they can run at full load, continuously, for any length of time without overheating. The heat sink is big enough to keep the temperature on low level that guarantees reliability and long time functionality. That is the reason why our units are more than 30% heavier than competitors' units.



SRS S-DRIVE™ TECHNOLOGY

Removes any barriers of the minimum load connected to the dimmer output. It does not matter whether you are using the inductive load or resistive load – the dimmer will always have smooth dimming, starting from the zero loads to the maximum loads.



SRS W-DMX® TRUE OUT

Converts W-DMX® to the regular DMX signal and splits to all DMX outputs. This saves your money for additional W-DMX® receiver and also offers you the option to use the other DMX equipment connected to an W-DMX® true out capable device.



SRS VARIOSPEED™ FAN

Mag-Lev fans are used. These fans are extremely quiet and have a life span that is almost ten times longer than the bearing fan. We use variable speed control depending on the inner temperature and load of the circuits.



SRS ULTISENSE™ SOFTWARE

Software allows you to communicate & configure the entire range of SRS Ethernet capable devices and S.net network. It offers comprehensive real-time status reports at any time.



SRS STUDIO™ RISETIME

SRS Studio Risetime guarantees that the Risetime of the dimmer channels is not less than 400μs measured 10–90% on nominal load. 400μs risetime is a top of value currently used in TV studios environment.



SRS 1P+N PROTECTION

A device equipped with the 1P+N protection of output channels requested by some legal authorities.



SRS CUSTOMIZATION®

We can offer you hardware or software customization of the product. There is also the option to create a brand new device according to your needs.



SRS RDM DEVICES

DMX device equipped with the RDM module for remote monitoring and setting through the DMX in accordance with the RDM specification.



SRS WORLDWIDE USAGE®

Devices created for worldwide usage, equipped with the full range power supply.



SRS SWITCH CONTROL

Device controlled by DMX and also by the switch – all over the DMX cable. That allows you to use the device without the DMX console even on small venues or as a part of a scene controlled by actors on stage.



SRS 5-YEAR WARRANTY

Under our 5-year warranty, we guarantee repairs or replacements of our product without any fees, in the shortest time possible.

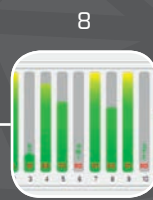


SRS LIFE-TIME WARRANTY

No questions, no complains, no refused warranty repairs. Repair or replacement of our product without any fees in the shortest time possible. During warranty repair we will supply a replacement device for free.

CONTENT

DIMMING



DIMMING

PORTABLE DIMMING



PORTABLE DIMMING

TOURING SYSTEMS



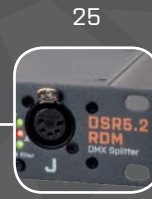
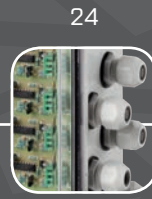
TOURING SYSTEMS

POWER CONTROL



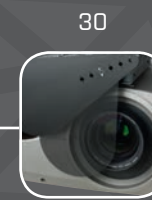
POWER CONTROL

DATA DISTRIBUTION



DATA DISTRIBUTION

SPECIAL DEVICES



SPECIAL DEVICES

DIMMING

NDP SERIES

NDPseries offers the highest quality of dimming available for any type of application – fixed or mobile. Excellent bullet-proof dimming with the latest high-end features: SRS S-Drive, SRS Studio Risettime chokes, Ethernet communication, graphic LCD display with all information including bargraph, measured values, W-DMX® signal strength, DMX signal status, real-time monitoring of outputs and many other features packed in a solid metal case.



NDP6 / NDP12

- Variable power modules
- Full-graphic LCD display with intelligent backlight
- Multilingual interface
- Simple navigation in menus with encoder and 2 buttons
- Output load check
- Ethernet port
- 2x DMX512
- USB port

OUTPUTS

- Screw terminal
- 12x Schuko
- 12x French Schuko
- 12x Swiss
- 12x Danish
- 12x UK
- 2x Harting® 6-pin
- 3x Harting® 10-pin
- 2/4x Harting® 16-pin
- Harting® 24-pin
- Socapex® 19-pin
- 12x CEE16/3p
- 6x CEE32/3p
- Neutrik® powerCON 32 Amp



NDP6 WM / NDP12 WM

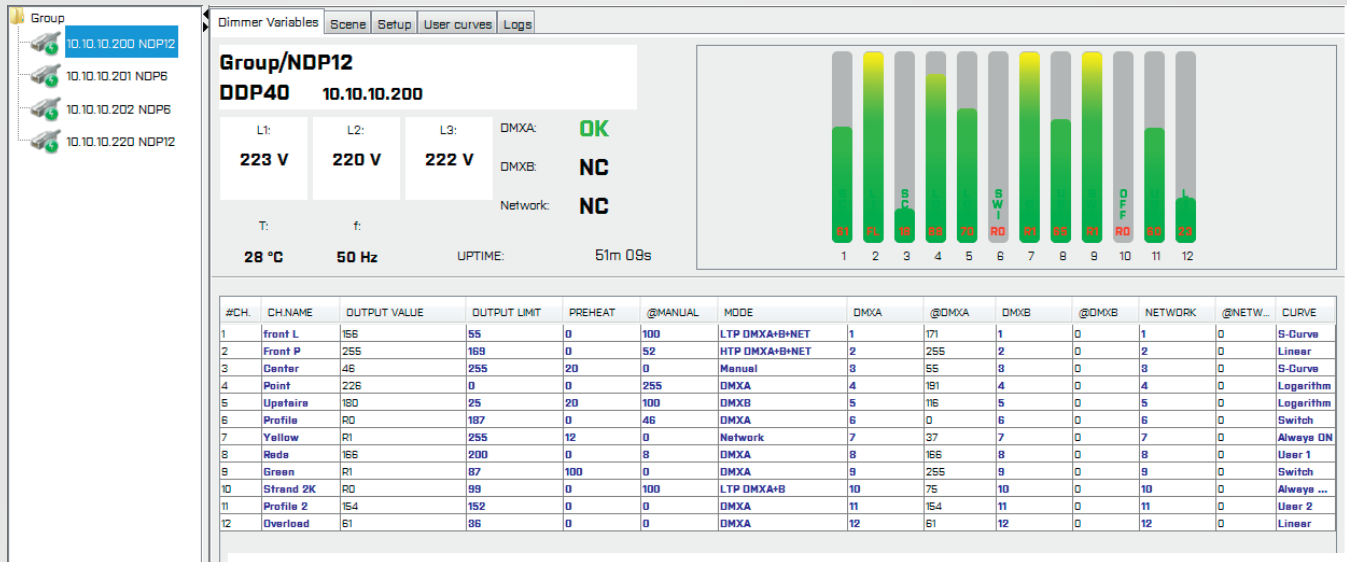
- Variable power modules
- Full-graphic LCD display with intelligent backlight
- Multilingual interface
- Simple navigation in menus with encoder and 2 buttons
- Output load check
- Ethernet port
- 2x DMX512
- USB port

Thanks to the idea of network connection, NDPseries can be controlled via various signal sources: two DMX ports, W-DMX®, Ethernet protocols S.net, or ART-Net™ or simple just with the pre-programmed scenes or manual mode.

Future software update via an USB port takes only a few seconds.



ULTISENSE SOFTWARE



UltiSense software is a JAVA based application compatible with PC/MAC/LINUX platforms. It enables full control and configuration of the entire range of SRS Ethernet capable devices and the S.net network. With remote access via Ethernet to the devices it opens new horizons in remote management in rental or architectural environments and with comprehensive real-time status reports you have all necessary information on your laptop, PDA or MAC.

REAL-TIME MONITORING

- Voltage & current of each phase
- Temperature & frequency
- Power factor
- Power consumption
- Short circuit, No load, Load fail
- Dimmer level, curves
- W-DMX®
- Uptime of all devices
- Communication logs

PROPERTIES

- Dimming rooms
- Racks/dimming units
- SRS nodes, CAT-5 extenders, RDM, ..

SAVE, LOAD & COMPARE

- Projects snapshots
- Project properties
- Installed/actual values
- Power consumed on job/tour/totally

S.net NETWORK

- Based on Ethernet, CAT-5, 10/100Mbit
- Wired or W-Fi connection with encoding
- GSM connection for monitoring the installation

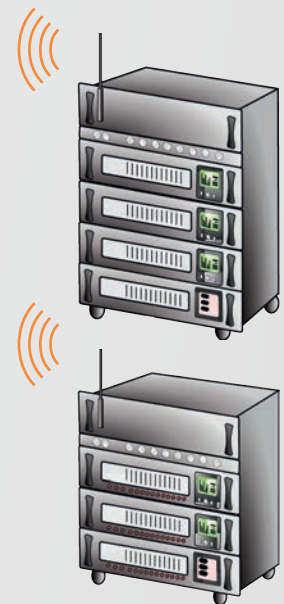
S.net RENTAL

- | With the SRS UltiSense computerized control system you have a complete real-time reporting facility and the option to setup the dimming with just few clicks. Software opens new horizons of the real Ethernet communication usage between all parts of S.net network.
- | The possibility to remotely reload settings to all racks on the stage via WI-FI or Ethernet access gives you the option to use your racks at many venues without spending time on manual setup.
- | We have created a simple and secure solution for all rental needs.

STAGE



ULTISENSE



DESK

ULTISENSE



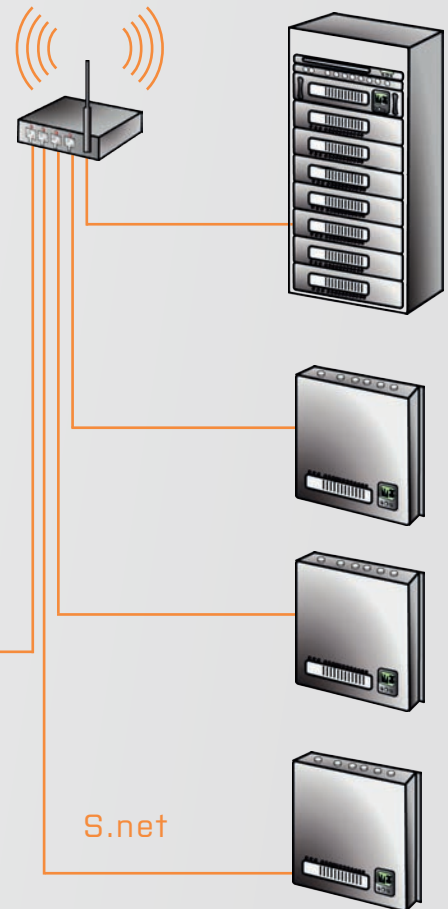
WI-FI S.net

S.NET ARCHITECTURAL

- | With the SRS UltiSense control system you have a complete real-time reporting facility and an option to set-up the complete installation.
- | Communication over WI-FI and Ethernet is as simple and fast as your office. Option to have the WI-FI encoded and protected guarantee that your infrastructure is always protected.
- | We have created a simple and secure solution for all architectural needs.



ULTISENSE



CONTROL ROOM

SERIES 400

The series400 offers a reliable and affordable 3U 19" rack-mount digital dimming solution with an integrated mains switch or RCD. With SRS Studio Risetime and SRS Generator technologies it is the right choice for rental use. Proven design and huge spare capacity of components mean that you can use this unit on tour with anyone, anytime.



DDP12

- 12-channel dimmer pack
- 3U, 19" rack-mount with integrated main switch or RCD
- DMX512 / Analog / Manual / Scene
- LCD display + encoder
- Individual & block channel patching, preheats, curves
- Electronic lock
- LTP / HTP
- Sequential test of outputs
- Scenes / DMX fault scripts

DDP60

- 6-channel dimmer pack
- 3U, 19" rack-mount with integrated main switch or RCD
- DMX512 / Analog / Manual / Scene
- LCD display + encoder
- Individual & block channel patching, preheats, curves
- Electronic lock
- LTP / HTP
- Sequential test of outputs
- Scenes / DMX fault scripts

The series400units have a simple and intuitive menu. Navigation through the menu via encoder and two buttons is easy. The output bargraph is accessible through just one button. Setting of the unit takes only a few minutes.



OUTPUTS

- Screw terminal
- 12x Schuko
- 12x French Schuko
- 12x Swiss
- 12x Danish
- 12x UK
- 2x Harting® 6-pin
- 3x Harting® 10-pin
- 2/4x Harting® 16-pin
- Harting® 24-pin
- Socapex® 19-pin
- 12x CEE16/3p
- 6x CEE32/3p
- Neutrik® powerCON 32 Amp

2.3kW
10 A



3kW
13 A



3.7kW
16 A



5.7kW
25 A



7.4 kW
32 A



400
µS



5

DDP61

- 2U, 19" rack-mount
- DMX512 / Analog / Manual / Scene
- LCD display + encoder
- Individual & block channel patching preheats, curves
- Electronic lock
- LTP / HTP
- Sequential test of outputs
- Scenes / DMX fault scripts



OUTPUTS

- Screw terminal
- 6x Schuko
- 6x French Schuko
- 6x Swiss
- 6x Danish
- 6x UK
- Harting® 16-pin
- Socapex® 19-pin



SERIES 400 WM

wall mount series

The series400 WM fixed installation is designed to provide a reliable and affordable plug-in solution for architectural installations. Its low profile and well designed look, which is perfect for wall-mount installations, SRS Thermal management and SRS Variospeed fans assure quiet and long-term operation.

Series400 WM is designed around the same components as the touring version of series400, with the same unique features proven in rental.



2.3kW
10 A

3kW
13 A

3.7kW
16 A

5.7kW
25 A

7.4kW
32 A



400
µS



1P+N



DDP60 WM / DDP12 WM

- Wall-mount with integrated main switch or RCD
- DMX512 / Analog / Manual / Scene
- LCD display + encoder
- Individual & block channel patching, preheats, curves
- Electronic lock
- LTP / HTP
- Sequential test of outputs
- Scenes / DMX fault scripts

OUTPUTS

- Screw terminal
- 12x Schuko
- 12x French Schuko
- 12x Swiss
- 12x Danish
- 12x UK
- 2x Harting® 6-pin
- 3x Harting® 10-pin
- 2/4x Harting® 16-pin
- Harting® 24-pin
- Socapex® 19-pin
- 12x CEE16/3p
- 6x CEE32/3p
- Neutrik® powerCON 32 Amp

RCK DIMMER PACK

DDP12-RCK

- 12-channel dimmer pack
- 3U, 19" rack-mount with integrated main switch or RCD
- DMX512 / Analog / Manual / Scene
- LCD display + encoder
- Individual & block channel patching, preheats, curves
- Electronic lock
- LTP / HTP
- Sequential test of outputs
- Scenes / DMX fault scripts



NDP12-RCK

- Variable power modules
- Full-graphic LCD display with intelligent backlight
- Multilingual interface
- Simple navigation in menus with encoder and 2 buttons
- Output load check
- Ethernet port
- 2x DMX512
- USB port



RCK HOLDER

- 4U rack-mount unit
- Durable wheels
- Position-adjustable connector
- Customized

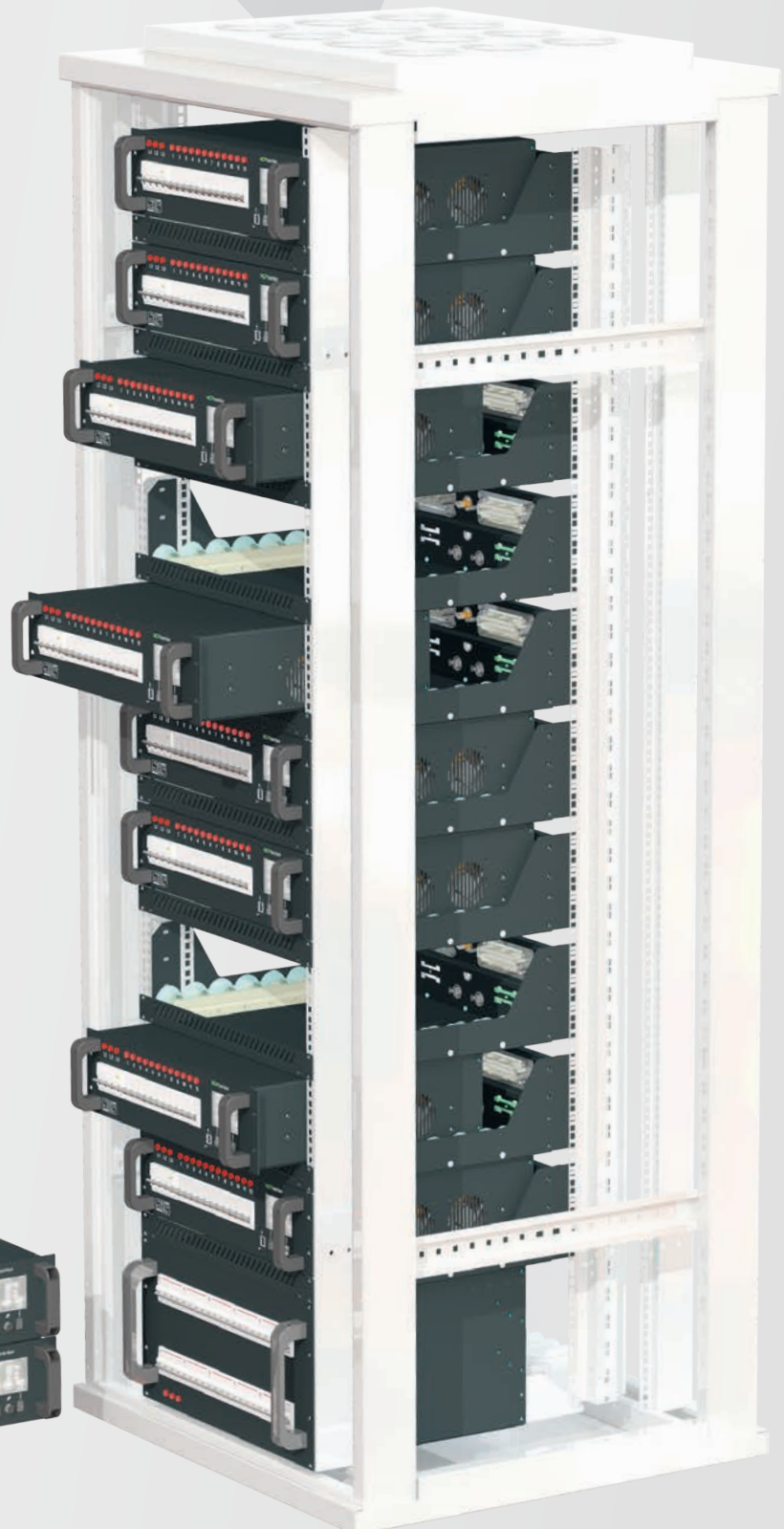


The RCK system is a perfect solution for fixed installations, where quick and easy replacement of DDP, NDP or SPU units is necessary. This 4U system features durable wheels and connectors that provide trouble-free operation. Several RCK units fit into a custom-made rack to meet the requirements of the venue.

RCK RACK

- Easy change or replacement of the dimmer, switch or other device
- Ideal for touring/studio installations
- Suitable to be mounted on standard telecom rack
- Can be supplied with a power distributor
- Can be used with series400 and SPU series units

Custom-made rack designed for venues, where fixed installations are necessary. Sometimes the dimmer packs have to be exchanged or replaced by other units. The RCK dimmer packs are designed to be swapped easily between each other or to be taken on a tour. This system makes it easy and realistic to happen.



PORTABLE DIMMING

Portable dimming devices are reliable and affordable dimming devices with one, four or six channels. Thanks to their bullet-proof design in an aluminium mono-block and the W-DMX® technology, they are perfect for the use in TV studios and venues requiring ultra portable and quiet operation. Each model can be equipped with a wireless module on request.

DP1 / DP3

- 1x 16A
- DP1: W-DMX® / DMX + fader
- DP3: DMX + fader
- C-clamp holder



OUTPUTS

- Schuko
- French Schuko
- Swiss
- Danish
- UK
- CEE16/3p
- CEE32/3p
- CEE63/3p
- Neutrik® powerCON



DP6 / DP12

- DP6: 1x 25A
- DP12: 1x 53A
- Controlled by W-DMX® / DMX + Fader
- Massive aluminum case



DDL4-DIN

- DIN-rail or wall mount
- 4-channel 300W dimmer
- SNAP-IN power and DMX terminals
- Software patch
- Preheat setting
- Limit setting
- Editable custom dimming curves
- Convectional and LED bulb dimming
- Convectional cooling without a fan
- Double overheat protection



DDP40 / DDP60 / DDP BAR are portable and easy-to-handle dimmers. With their optional integrated SRS W-DMX® true output technology and isolated DMX outputs near to the output socket they allow the usage of the LED fixtures.

PORTABLE DIMMING

PDP40 / PDP60

- DMX512 / W-DMX / Manual
- LCD display + encoder
- Individual & block channel patching, preheats, curves
- Electronic lock
- LTP / HTP
- Single phase/Three-phase operation



DDP BAR4 / DDP BAR6

- 4/6x dimmer / hot-power
- Aluminium 1.5m / 2.2m long
- W-DMX® / DMX512
- W-DMX® signal bargraph
- Tripod / C-clamp mounting points

OUTPUTS

- Schuko
- French Schuko
- Swiss
- Danish
- UK
- Neutrik® powerCON
- CEE16/3p



1.4kW
6A

2.3kW
10A

3kW
13A

3.7kW
16A

TOURING SYSTEMS

- | Touring systems are designed as a modular system to provide an affordable and plug-in solution for touring.
- | Systems are produced with 24 up to 96 channels of dimming/hot power. The base of the touring systems is power distribution with optional metering followed by the NDP series or series400 dimming units. Variable patch panels fit easily to the back or the top of a unit.

INPUTS

- IEC60309 – CEE form
- Socapex® 19-pin
- Harting® 10-pin
- Harting® 16-pin
- Harting® 24-pin
- Twistlock
- Powerlock

PROTECTION

- Main switch, optional RCD
- Optional 1P+N
- Optional Hydromagnetic breakers

METERING

- NDPmetering
- Advanced metering
- Simple metering

OUTPUTS

- IEC60309 – CEE form
- Socapex® 19-pin
- Harting® 10-pin
- Harting® 16-pin
- Harting® 24-pin
- Twistlock
- Powerlock



| Touring systems are packed in heavy duty custom made flight cases always perfectly protecting your system during transport.

| All touring systems have a 5-year warranty.

PATCH

- Wieland GST 18i3
- Wieland GST 15i2

DATA DISTRIBUTION

- DMX splitter
- Optional W-DMX®
- Optional communication module



2.3kW
10 A



3kW
13 A



3.7kW
16 A

400
µS

5.7kW
25 A



1P+N



POWER CONTROL

This switching device allows you to control mains power remotely via a DMX line or a manual switch. All switching devices have 1P+N switching required by some regulatory authorities. Each model is equipped with a special 100A pulse resistant relay which allows long LASTING function even in hard operational environment.

For special purposes we are able to deliver custom switching units with an unlimited number of channels, various load per channel, with certification required by regulatory authorities.



DMX2SW / DMX1SW

- 2x 8A or 1x 16A switching channels
- DMX or switch controlled
- Optical signalization of output state
- Variable outputs

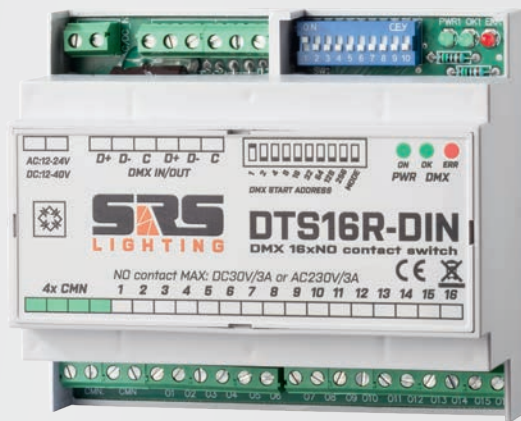
OUTPUTS

- Schuko
- French Schuko
- Swiss
- Danish
- UK
- CEE16/3p
- CEE32/3p
- Neutrik® powerCON

3.7kW
16A

DTS 16R-DIN

- 16x 3A Normally Open switching outputs
- Over-voltage protection of the DMX line
- LED indication for the DMX line
- DIP switch for the DMX address setting



1P+N
RELAY



SPU32 / SPU16

- Wall-mount
- 32x 0.5A or 16x 1A outputs
- DMX screw terminal
- Single phase operation

3.7kW
16A

SPU

SPU60 / SPU12

- 3U, 19" rack-mount with integrated main switch or RCD
- DMX512 / Analog / Manual / Scene
- LCD display + encoder
- Individual & block channel patching, preheats
- Electronic lock
- LTP / HTP
- Sequential test of outputs
- Scenes / DMX fault scripts

Digital switch pack SPU12 is designed to fulfill all the requirements for most light demanding applications such as theatres, live concerts and permanent installations, where DMX controlled switching of main power is needed.

The SPU12 unit features SFX function that generates a sound as well as sequence function that is specially made for the sequence control of outputs either automatically, with the start/stop via DMX or via analog.



SPU60 WM / SPU12 WM

- Wall-mount with integrated main switch or RCD
- DMX512 / Analog / Manual / Scene
- LCD display + encoder
- Individual & block channel patching, preheats
- Electronic lock
- LTP / HTP
- Sequential test of outputs
- Scenes / DMX fault scripts



OUTPUTS

- Screw terminal
- 12x Schuko
- 12x French Schuko
- 12x Swiss
- 12x Danish
- 12x UK
- 2x Harting® 6-pin
- 3x Harting® 10-pin
- 2/4x Harting® 16-pin
- Harting® 24-pin
- Socapex® 19-pin
- 12x CEE16/3p
- 6x CEE32/3p
- Neutrik® powerCON 32 Amp



DATA DISTRIBUTION

DSR8W-PRO

- Wireless DMX transceiver / 8-way splitter
- Slide antenna
- Interference free
- W-DMX® Co-Existence mode
- Point / Multipoint operation
- Plug & Play
- LED indicators

DSR10 / DSR10N

- 1U, 19" rack-mount
- 10-channel DMX splitter 3/5-pin or RJ45
- LED indication of DMX line status

All W-DMX® products use the license free ISM band, and are certified for usage in the United States, Canada, Japan, and all EU countries. The SRS W-DMX® units use, Frequency Hopping Spread (FHSS) Spectrum, along with a number of other techniques to avoid interference and to create a very reliable wireless link. W-DMX® devices are produced as compatible devices with other producers listed as OEM partners of Wireless Solution and Lumen Radio.

SRS DMX splitters are available in four, eight and ten channel formats. Housed in a 1U high 19" rack mounting case or mounted on truss/wall, they provide the true optic isolation for all DMX lines used on the stage.

LED indicators are checking both signal lines and deliver information when any problem occurs. Each output has a separate driver, optical isolator and power supply to ensure the highest possible level of protection. Amplification allows extension of a DMX link above the maximum length specified by the DMX512 standard. Up to 32 fixtures can be attached to each branch of the DMX line.



DSR10AB

- 1U, 19" rack-mount
- 2-channel DMX input A/B
- 10-channel with A/B switch
- LED indication of DMX line status



DST4W-PRO

- Wireless DMX transceiver / 4-way splitter
- Slide antenna
- Interference free
- W-DMX® Co-Existence mode
- Point / Multipoint operation
- Plug & Play
- LED indicators



| The initial configuration procedure is just as simple as with any other W-DMX® products – just one press of the button is all it takes to search for and link every unallocated receiver

| A choice of other antenna is available to increase the standard transmission range of 700m up to incredible 3200m.

DST4H

- Truss/wall-mount
- 4-channel DMX splitter/booster
- 4-channel AC power 16A splitter
- LED indication of DMX line status
- SRS truss holders

DST4

- Truss/wall-mount
- 4-channel DMX splitter
- LED indication of DMX line status
- Termination switch with indication
- SRS truss holders



DST4

- Truss / wall-mount
- 4 channel DMX splitter / booster / amplifier
- LED indication of DMX line status
- Small version of DST4
- M10 thread for C-clamp
- Unischuko power cable clamp



W-DMX® RX / TX

- Wireless DMX Receiver or Transmitter
- Interference free
- W-DMX® Co-Existence mode
- Point / Multipoint operation
- Plug & Play



DST8

- Truss/wall/DIN rail-mount
- 8-channel DMX splitter
- LED indication of DMX line status
- Termination switch with indication



DSD-6

- DIN rail-mount
- 6-channel DMX splitter
- Optically isolated outputs
- Amplification on each output



DSR10-IP

- 10-channel DMX splitter/booster
- Plastic IP65 waterproof housing
- Transparent cover for easy orientation
- 10 glands, snap-in screw terminals



RDM SPLITTERS



DSR10-RDM

- 1U, 19" rack-mount
- 10-channel DMX/RDM splitter/booster
- Single universe unit
- LED indication of DMX and RDM
- Termination switch
- RDM filter on each output
- 3-pin / 5-pin / RJ45 connectors

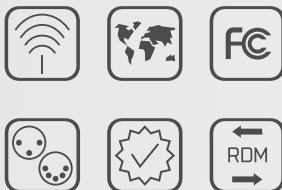
DSR5.2-RDM

- 1U, 19" rack-mount
- 2x 5-channel DMX/RDM splitter/booster
- Double universe unit
- LED indication of DMX and RDM
- Termination switch
- RDM filter on each output
- 3-pin / 5-pin / RJ45 connectors



DST5-RDM

- Truss/wall-mount
- 5-channel DMX/RDM splitter/booster
- LED indication of DMX and RDM
- Termination switch
- RDM filter on each output
- 3-pin / 5-pin / RJ45 connectors



MERGER

DXD-8NI

- 1U, 19" rack-mount
- LCD display, encoder and 2 buttons
- DMX status, merger modes on display
- Signals on all DMX/RDM outputs are boosted
- DMX channel offset for each input and output
- DMX scenes / HTP / LTP rules
- Firmware update via SRS upgrade cable



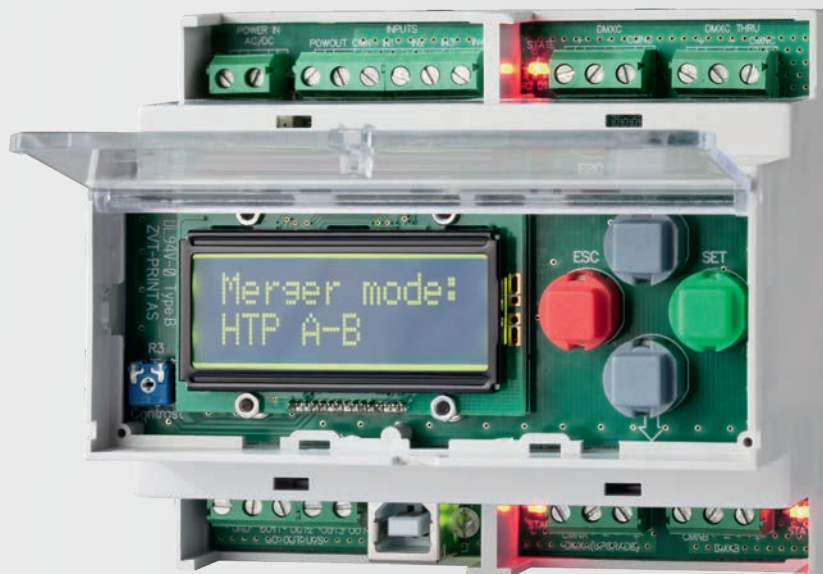
The DXD series unit is a two-input DMX merger with HTP / LTP / DMX-A or DMX-B backup modes. It is ideal for applications where merging of two DMX signals is needed. Examples of usage are two DMX consoles controlling one dimmer system or controlling of house light.

The DXD merger can also be used as a scene call device for calling of the minimum DMX value. This value is then sent to the dimmer with connected LED lights in case the main console is disconnected or LED lights are flickering on low DMX value.



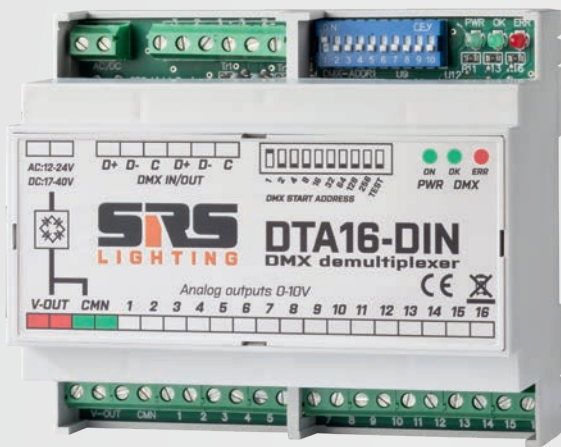
DXD-DIN

- DIN rail/truss-mount
- LCD display, 4 buttons
- Signals on all DMX/RDM outputs are boosted
- DMX scenes / HTP rules
- Firmware update via SRS upgrade cable



DEMULTIPLEXERS

The SRS's Demultiplexers are available in a 19" rack mounting case, a small metal enclosure or in DIN box. Demultiplexers with 16, 48 or 64 channels are fitted with 25-pin D type connectors for analog connection, DMX input/output and a low voltage power inlet.



DTA1664 / DTA1248

- 64/48 x Analog 0-10V outputs
- Sequential test function
- Outputs are short-circuit protected



DTA16-DIN

- DIN rail-mount
- 6-channel DMX splitter
- Optically isolated outputs
- Amplification on each output



DTA16

- 16x Analog 0-10V outputs
- Sequential test function
- Outputs are short circuit protected



SPECIAL DEVICES

LIGHT CONSOLES

Housed in a 19" rack mounting case or a wall-mount version with an ultra low profile body, the SRS consoles are available in variety of sizes. All units are fitted with the DMX output, analog 0-10V output and optionally the W-DMX® output. With the USB module you are able to change the DMX start address or play the scenes from a USB key.

DAC18 / DAC12

- 3U, 19" rack/wall-mount
- 19/13x Long Lasting 60mm slide faders with dust cover
- 19/13x Flash button
- DMX + Analog 0-10V output



DAC6

- Wall-mount ultra low profile body
- 7x Long-life 60mm slide faders with dust cover
- 7x Flash button
- DMX + Analog 0-10V output



ALD SERIES



ALD DEVICE

- 8 / 16-bit LED dimmer
- 3 / 4 / 6-channel LED dimmer
- Variable voltage outputs 12V / 24V

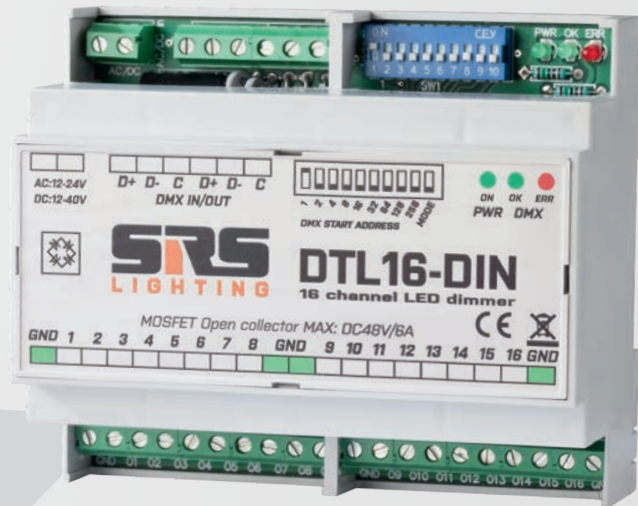
ALDseries unit was created as the cost-effective solution for all LED applications. ALDseries devices aren't equipped with the power supply so you can select the right one according to the used LED tube or stripe, which saves money when other power supply is used in installation.

type	LED dimming/driver function
ALD 1D24	- DMX LED dimmer 1x DC12-24V
ALD 3D24	- DMX LED dimmer 3x DC12-24V
ALD 6D24	- DMX LED dimmer 6x DC12-24V
ALD REC6-3	- DMX RGBAWW dimmer, 6x 350mA
ALD REC6-7	- DMX RGBAWW dimmer, 6x 700mA
ALD REC6-10	- DMX RGBAWW dimmer, 6x 1000mA



DIN DEVICES

DMX devices housed in a DIN enclosure are an ideal solution for architectural usage. The wide choice of variants gives the engineers the opportunity to control the intelligent installation through the S.net, RS-232, RS-485, USB, DMX or DALI interface.



type	function
ATD16-DIN	- 16-channel analog 0 to +10V DMX converter
DSD6-DIN	- 6-channel DMX splitter/booster
DTA161-DIN	- 16-channel DMX to analog 1 to +10V converter
DTA16-DIN	- 16-channel DMX to analog 0 to +10V converter
DTS16F-DIN	- 16-channel DMX OC-MOSFET switching unit
DTS16R-DIN	- 16-channel DMX NO contact switching unit
DTS2R-DIN	- 2-channel DMX switching unit with NO/NC/CMN contact
DTL16-DIN	- 16-channel LED dimmer
DTA6R4-DIN	- 6-channel DMX to analog 0 to +10V + 4x RELAY NC/NO/CMN
DTA8F8-DIN	- 8-channel DMX to analog 0 to +10V + 8x OC MOSFET
DTA8L8-DIN	- 8-channel DMX to analog 0 to +10V + 8x MOSFET dimmer
iGENT-DIN	- DMX to RS232 + RS422 converter
iGENT-R-DIN	- DMX to RS232 converter + 2x relay
DXD-DIN	- 2-channel DMX to DMX merger



PROJECTOR SHUTTER

- Fits most video projectors from small to large scale
- Test / Mirror function switch
- Ultra torque servo
- Wide choice of projector flaps
- DMX, USB or switch controlled
- SRS straps for easy fitting



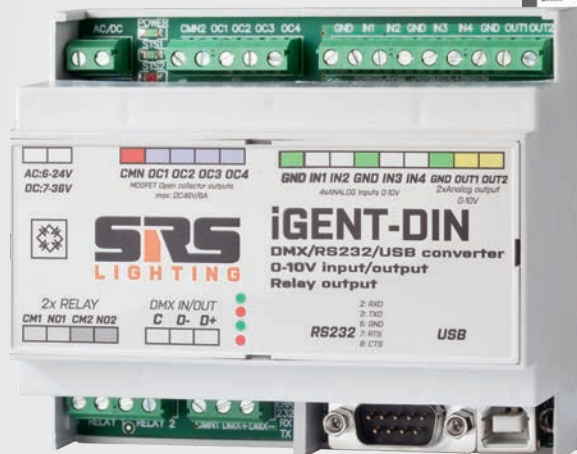
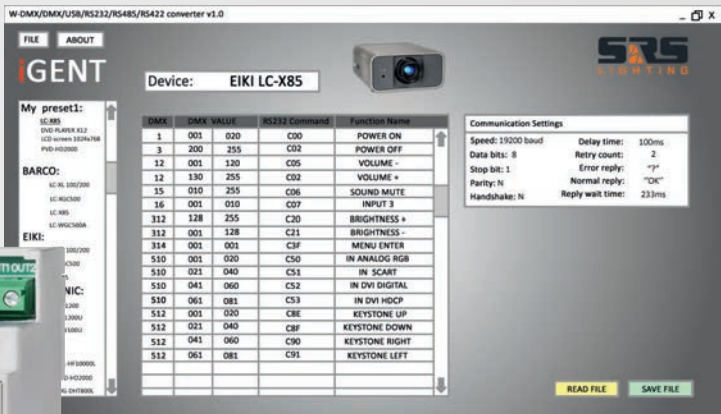
Housed in an easy to snap-in metal enclosure, the Projector Shutter is widely used in variety of projectors. The device provides video black-out by obstructing the light beam. The Ultra-torque servo offers precise movement even for big flaps needed for ultra wide lenses of a projector.

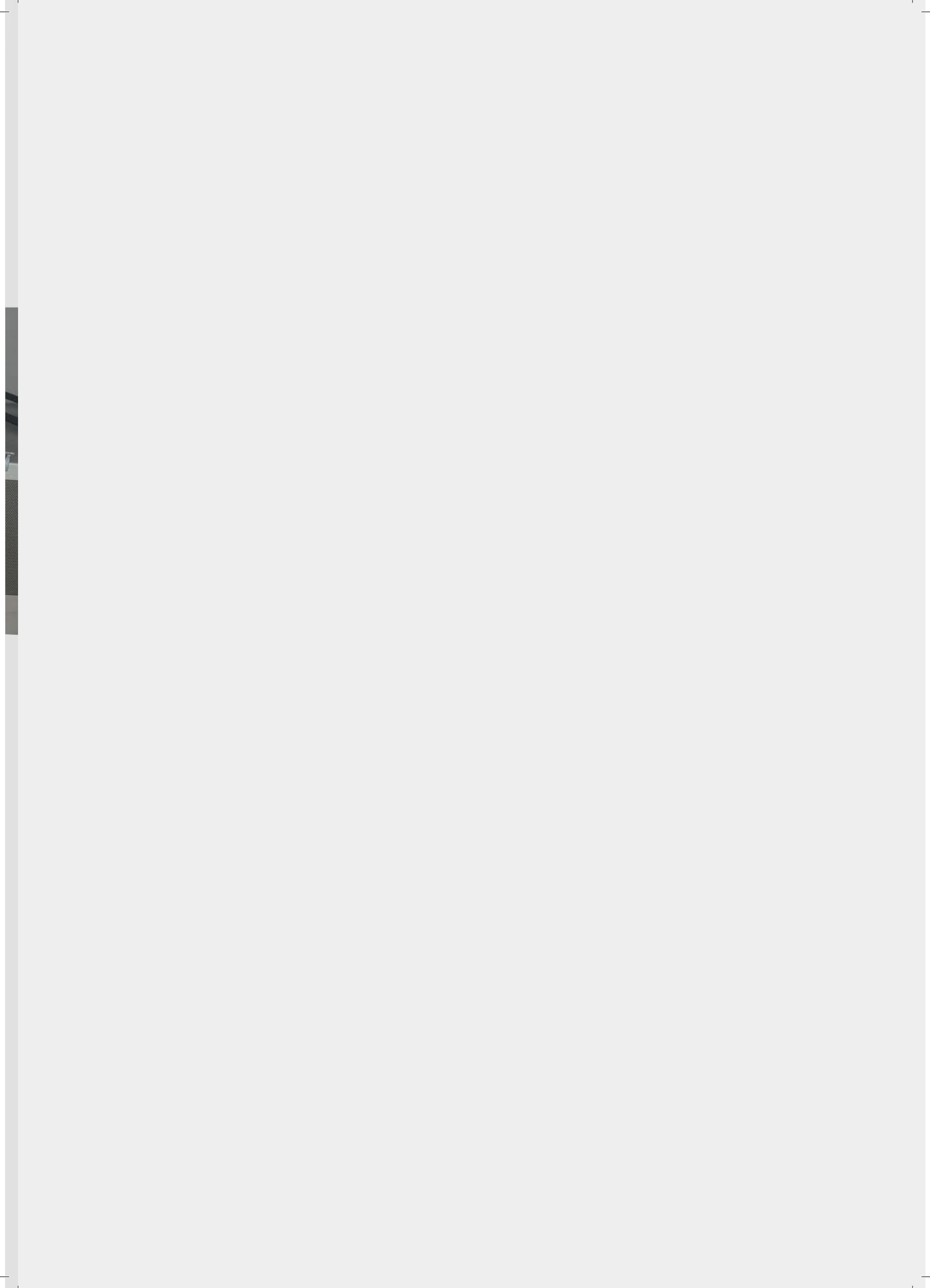
SRS switch control over DMX cable allows control of the device without DMX. SRS USB control cable allows control of the device via USB.



IGENT / IAGENT-DIN

- Control any RS232 / RS422 device over DMX: Projector, DVD player, ...
- Optically isolated RS232, RS422, DMX 512
- Easy to configure via PC application
- USB programming port
- Optional W-DMX®
- SRS straps for easy fitting







| SRS Group s.r.o.
Rybnicna 36/D
831 07 Bratislava
Slovak Republic

| www.srs-group.com
sales@srs-group.com
phone: +421 2 4468 1417
fax: +421 2 4468 1419