





intelligent light solutions

Welcome to the world of **Infinity**

Experience the intelligence inside

Infinity delivers solutions. Solutions for theatre or TV-applications with extreme silent operating Signature units which produce a high grade quality flicker-free output. Solutions for light engineers and programmers with the Chimp controllers, programming a show within minutes and doing this virtually wireless. Solutions for event planners with Furion units with strong, powerful beams, saturated colours, amazing visual effects and offering features which are ahead of their time. Infinity offers answers to entertainment questions: intelligent, intuitive fixtures, easy to operate light controllers and LED based theatre-fixtures with the look and feel of actual Tungsten luminaires. Welcome to the Infinity-family!

Infinity Signature Series “Spirit of RJ”

Born out of the collaboration with world-renowned lighting designer Robert Juliat, our Infinity Signature Series redefine the current standards for theatre lighting and offer a complete range of LED theatre engines. Now you have the possibility of replacing your Tungsten units with genuine LED intelligent fixtures. Energy efficient top-of-the-bill LED engines giving you exactly what you require: excellence.

Infinity Chimp light controllers are in control

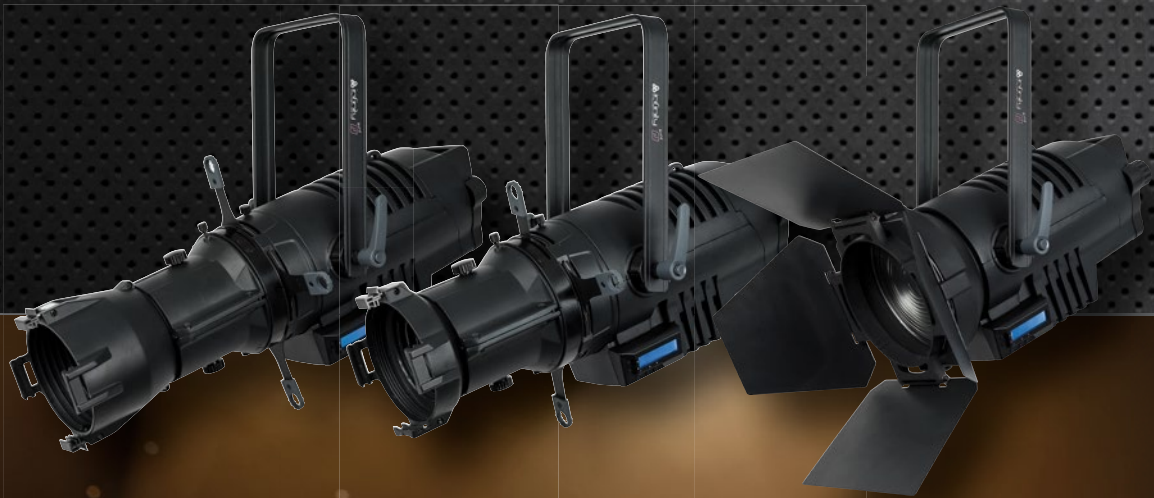
The Infinity Chimp light controllers have received an update and are now available as 2nd generation units: Infinity Chimp 100.G2 and 300.G2. W-DMX by Wireless Solution is no longer a separate option but has been integrated as a standard feature into the 2nd generation units. The Chimp controllers still remain user-friendly and complete units which are so easy to handle that they are almost plug-and-play. Get in control with the Chimp!

Infinity Furion family grows

Powerful beams and spots, versatile washes and matrix effects, Infinity Furion offers a wide array of possibilities and is happy to announce a new and powerful member into the Furion family: the Infinity Furion B401. The most important feature and a true novelty the B401 has to offer is the colour-bump wheel, enabling you to create a vast amount of split colours or bump colours extremely easy, tremendously quick and accurate. Experience it for yourself!



INFINITY *Signature* SERIES
TRADITION REDEFINED





The New Standard for Theatre Illumination. The tools you have always wanted to create beautiful, energy efficient lighting for your Theatre, Church, Studio or School. These luminaires utilise the latest LED Technology with European software while having operational and lens options familiar to any entertainment technician. To create our new range of theatre lights we have found an excellent partner in Robert Juliat.

We have created a new range of theatre spots in collaboration with world renowned manufacturer Robert Juliat. With almost 100 years of expertise we found a partner to create modern and qualitative luminaires. Only Lumiled LEDs are used throughout the range. This ensures consistent binning and ensures colour consistency throughout. The warm white LEDs have been selected to give a consistent 3000K of temperature with a CRI of +95. Our selection of coloured LEDs allows for the best possible colour mixing with the highest CRI. Whether looking for subtle tints to light actors or bright deep colours for washes or moods you have total control of your colour palette. So you are always getting the colours you expect and deserve.

Our software has been developed to specifically deliver everything you need. It delivers flickerless dimming and the ability to flash from zero to full with no time lag. With the coloured units we also offer a unique virtual colour wheel with 60 of the most popular gel colours for Theatre. We have set these colours to deliver the best possible Lumen output and the best possible CRI. Together with our accurate dimming curves this allows for perfect colour rendering in any application. By using the virtual colour wheel it is possible to run the unit as a simple 3 channel device. For those designers used to using a scroller with their luminaires this is the perfect solution. Made from a mix of aluminum extrusions, castings and engineering plastics our units are designed for robustness with as low a weight option as possible. Using the highest grade components throughout our range means we are able to offer a full two year warranty.



INFINITY *Signature* SERIES
TRADITION REDEFINED

Infinity TS-260C7 Profile Engine



200010 Body without lens

Being able to produce perfectly calibrated colours by using a 7 colour Lumiled LED engine is the big advantage of the TS-260C7 Profile engine. Infinity combined 64 of the most used theatrical colours into a built-in virtual stroller. Add to this a CRI value which is consistently higher than 96 over the entire CCT range and the TS-260C7 becomes a formidable addition to any application where different moods in a high quality of light is needed. Equipped with 7 different DMX modes finding the right operation modus is no issue.



Features:

- Delivers the performance of a 750W Tungsten Halogen unit
- 260W Lumiled 7 colour LED engine using custom designed array
- CRI > 96 Consistently on full CCT range
- LED Colour Linearity Compensation
- LED Colour Temperature Drift Compensation (on all LEDs)
- Optics Colour Shift compensation
- Colour wheel with 64 spectrum matching Filter gels
- 2000 – 8000K Seamless CCT channel
- RGB, CMY and HSI Colour control
- 16 bit Intelligent high resolution virtual dimming
- Tungsten mode with natural colour drift & timing simulations
- Flicker-Free with selectable PWM by DMX
- RDM allowing for remote setting and recall of information
- Custom design silent cooling system
- 1CH DMX mode for conventional replacement





Infinity TS-300 Profile Engine

200001 3200K Body without lens



Looking for fitting LED-based answers to conventional Tungsten challenges was more than enough motivation for Infinity to design the Signature series. The TS-300 Profile Engine is one of those answers. Built around a powerful, reliable 300W Lumiled LED engine with a colour temperature of 3200K and a high, consistent CRI of more than 96 it will match conventional 750W Tungsten fixtures perfectly. Various calibration systems inside the intelligent, intuitive software make sure that the TS-300 will fit in seamlessly in Tungsten setups. Very well equipped for theatre or TV-applications where a steady output, high quality of light and silent fan operation are not only required but actual necessities. The Infinity Signature TS-300 has the complete package.

200002 5700K Body without lens

For cinematic or TV-applications a different colour temperature is required. In these cases 5700K is the most commonly used colour temperature because it resembles daylight. The Infinity Signature TS-300 5700K will stay consistent, daytime or night time which offers the camera-operator more freedom to get the perfect shot. The energy efficient TS-300 produces not only a steady and perfectly calibrated, Tungsten-like 5700K but does this with a high CRI of over 95 constantly. The Silent Fan mode makes sure that the TS-300 is seen but not heard and issues like rolling shutter or obtaining a flicker free image can be set through the PWM feature. For film and video applications the logical choice.



Features:

- Delivers the performance of 750W Tungsten halogen unit
- 300W, Custom designed Lumiled Engine
- 200001 : CRI > 96 / 200002 CRI > 95
- Consistent colour temperature regardless of intensity
- 16 bit Intelligent high resolution virtual dimming
- Factory calibrated
- RDM allowing for remote setting and recall of information
- Custom design silent cooling system
- Neutrik connections



INFINITY *Signature* SERIES
TRADITION REDEFINED



Infinity TF-300 Fresnel

200202 3200K Fresnel 300W LED



On any stage good lighting and the quality of light are almost obligatory. Equally important is the actual light placement. Which areas need to be highlighted and how. Should it be a razor-sharp and perfectly defined image or should it be evenly spread across the background? With the Signature Profile Engine you can accentuate very precisely. For a broader presentation the TS-300 Fresnel 3200K is the perfect choice, spreading an even warm white light around the stage. The zoom focus mechanism is easy and intuitive, both manually and motorized by dmx applicable between 15° to 50°.

200201 5700K Fresnel 300W LED



To get a more natural feel to any film or video the light used should be of the highest possible quality with a matching consistent colour temperature. Due to these two characteristics it is able to light areas without showing any overlap or set boundaries. With the Signature TF-300 5700K Fresnel version spreading daylight with a high CRI of over 95 is no issue. This high value is possible due to selecting Lumiled LEDs, extensive measuring and calibration of the unit and using intuitive software. The zoom focus mechanism is easy and intuitive, both manually and motorized by dmx applicable between 15° to 50°.

Features:

- Delivers the performance of 1kW Tungsten halogen unit
- 300W, Custom designed Lumiled Engine
- Manual and motorized 15° -50° zoom control
- 200202 : CRI > 96 / 200201 CRI > 95
- Consistent colour temperature regardless of intensity
- 16 bit Intelligent high resolution virtual dimming
- Factory calibrated
- RDM allowing for remote setting and recall of information
- Custom design silent cooling system
- Neutrik connections



INFINITY *Signature* SERIES
TRADITION REDEFINED



INFINITY *Signature* SERIES
TRADITION REDEFINED

Infinity TF-260C7 Fresnel *Spirit of*

200203 7 Colour Fresnel 260W LED



The Infinity Signature TS-260C7 fixture is perfectly equipped for theatre and film applications. Seamlessly choosing the right colour temperature, adding the perfectly calibrated colour out of the virtual stroller, cancelling out rolling shutter and built-in Tungsten simulations. All these features combined turn the TS-260C7 into the only fixture for any TV-application. Lighting larger areas in a specified colour is no issue for the TS-260C7 Fresnel. With RGB, CMY or HSI control the desired colour is at your fingertips without worrying about the best possible mix from the 7 colours source, intelligence is inside. The zoom focus mechanism is easy and intuitive, both manually and motorized by dmx applicable between 15° to 50°.



Features:

- Delivers the performance of a 1kW Tungsten Halogen unit
- 260W Lumiled 7 colour LED engine using custom designed array
- CRI > 96 Consistently on full CCT range
- LED Colour Linearity Compensation
- LED Colour Temperature Drift Compensation (on all LEDs)
- Optics Colour Shift compensation
- Manual and motorized 15° -50° zoom control
- Colour wheel with 64 spectrum matching Filter gels
- 2000 – 8000K Seamless CCT channel
- RGB, CMY and HSI Colour control
- 16 bit Intelligent high resolution virtual dimming
- Tungsten mode with natural colour drift & timing simulations
- Flicker-Free with selectable PWM by DMX
- Custom design silent cooling system
- 1CH DMX mode for conventional replacement



TS-260C7 Profile Engine

200010 Body without lens

LED Engine Source:	260W Lumiled 7 colour LED engine using custom designed array.
Optical Information Output:	4500lm
Light quality:	>96 CRI Consistently (High CRI Mode)
Colour Temperature:	2000K ~ 8000K
Beam Angles:	15°-35°, 25°-50°, 5°, 10°, 14°, 19°, 26°, 36°, 50° (optional)
Electrical Specifications: Voltage:	100 -240 volts AC.
Frequency:	50/60 Hz
Power Factor:	0.96
Consumption:	260W max
Environmental Specifications: Ambient Temp:	0°C ~40°C (operating) / -10°C ~45°C (start-up)
IP Rating:	IP 20 indoor use only
Conformity:	CE Mark
Control Specifications: Control:	On board Menu, RDM, DMX512
Fan mode:	Silent, Auto, Full
DMX Channels:	Dimmer Mode, 1Ch Basic Mode, 5Ch Tungsten Mode, 6Ch HSI Pro Mode, 10Ch RGB Pro Mode, 10Ch CMY Pro Mode, 10Ch RAW Mode, 20Ch
Mechanical Specifications: Power connections:	Neutrik powerCON in- and through
Data connections:	Neutrik 3&5p DMX in- and through
Gobo slot:	B size, separate slot for diffuser or Iris
Pole operated:	Available as option
Construction:	Machined Aluminium, sheet metal, moulded engineering grade plastics.
Colour:	Black
Dimensions:	468 x 323 x 457 mm
Weight:	8,5Kg

TS-300 Profile Engine

200001 3200K Body without lens

LED Engine Source:	300W Lumiled White LED engine using custom designed array.
Optical Information Output:	8300lm
Light quality:	>96 CRI Consistently
Colour Temperature:	3200K
Beam Angles:	15°-35°, 25°-50°, 5°, 10°, 14°, 19°, 26°, 36°, 50° (optional)
Electrical Specifications: Voltage:	100 -240 volts AC.
Frequency:	50/60 Hz
Power Factor:	0.97
Consumption:	300W max
Environmental Specifications: Ambient Temp:	0°C ~40°C (operating) / -10°C ~45°C (start-up)
IP Rating:	IP 20 indoor use only
Conformity:	CE Mark
Control Specifications: Control:	On board Menu, RDM, DMX512
Fan mode:	Silent, Auto, Full
DMX Channels:	Dimmer Mode, 1Ch Basic Mode, 2Ch Pro mode, 4Ch
Mechanical Specifications: Power connections:	Neutrik powerCON in- and through
Data connections:	Neutrik 3&5p DMX in- and through
Gobo slot:	B size, separate slot for diffuser or Iris
Available as option:	Available as option
Construction:	Machined Aluminium, sheet metal, moulded engineering grade plastics
Colour:	Black
Dimensions:	468 x 323 x457 mm
Weight:	8,4Kg

200002 5700K Body without lens

LED Engine Source:	300W Lumiled White LED engine using custom designed array.
Optical Information Output:	6600lm
Light quality:	>95 CRI Consistently
Colour Temperature:	5700K
Beam Angles:	15°-35°, 25°-50°, 5°, 10°, 14°, 19°, 26°, 36°, 50° (optional)
Electrical Specifications: Voltage:	100 -240 volts AC.
Frequency:	50/60 Hz
Power Factor:	0.97
Consumption:	300W max
Environmental Specifications: Ambient Temp:	0°C ~40°C (operating) / -10°C ~45°C (start-up)
IP Rating:	IP 20 indoor use only
Conformity:	CE Mark
Control Specifications: Control:	On board Menu, RDM, DMX512
Fan mode:	Silent, Auto, Full
DMX Channels:	Dimmer Mode, 1Ch Basic Mode, 2Ch Pro mode, 4Ch
Mechanical Specifications: Power connections:	Neutrik powerCON in- and through
Data connections:	Neutrik 3&5p DMX in- and through
Gobo slot:	B size, separate slot for diffuser or Iris
Available as option:	Available as option
Construction:	Machined Aluminium, sheet metal, moulded engineering grade plastics.
Colour:	Black
Dimensions:	468 x 323 x457 mm
Weight:	8,4Kg

TF-300 Fresnel

200202 3200K Fresnel 300W LED

LED Engine Source:	300W Lumiled White LED engine using custom designed array.
Optical Information Output:	5000lm
Light quality:	>96 CRI Consistently
Colour Temperature:	3200K
Beam Angles:	15°-50°
Electrical Specifications: Voltage:	100 -240 volts AC.
Frequency:	50/60 Hz
Power Factor:	0.97
Consumption:	300W max
Environmental Specifications: Ambient Temp:	0°C ~40°C (operating) / -10°C ~45°C (start-up)
IP Rating:	IP 20 indoor use only
Conformity:	CE Mark
Control Specifications: Control:	On board Menu, RDM, DMX512
Fan mode:	Silent, Auto, Full
DMX Channels:	Dimmer Mode, 1Ch Basic Mode, 3Ch Pro mode, 5Ch
Mechanical Specifications: Power connections:	Neutrik powerCON in- and through
Data connections:	Neutrik 3&5p DMX in- and through
Pole operated:	Available as option
Construction:	Machined Aluminium, sheet metal, moulded engineering grade plastics.
Colour:	Black
Weight:	8,2Kg

TF-260C7 Fresnel

200203 7 Colour Fresnel 260W LED

LED Engine Source:	260W Lumiled 7 colour LED engine using custom designed array.
Optical Information Output:	3500lm
Light quality:	>96 CRI Consistently
Colour Temperature:	2000K ~ 8000K
Beam Angles:	15°-50°
Electrical Specifications: Voltage:	100 -240 volts AC.
Frequency:	50/60 Hz
Power Factor:	0.97
Consumption:	280W max
Environmental Specifications: Ambient Temp:	0°C ~40°C (operating) / -10°C ~45°C (start-up)
IP Rating:	IP 20 indoor use only
Conformity:	CE Mark
Control Specifications: Control:	On board Menu, RDM, DMX512
Fan mode:	Silent, Auto, Full
DMX Channels:	Dimmer Mode, 1Ch Basic Mode, 6Ch Tungsten Mode, 7Ch HSI Pro Mode, 11Ch RGB Pro Mode, 11Ch CMY Pro Mode, 11Ch RAW Mode, 21Ch
Mechanical Specifications: Power connections:	Neutrik powerCON in- and through
Data connections:	Neutrik 3&5p DMX in- and through
Pole operated:	Available as option
Construction:	Machined Aluminium, sheet metal, moulded engineering grade plastics.
Colour:	Black
Weight:	8,3Kg

200201 5700K Fresnel 300W LED

LED Engine Source:	300W Lumiled White LED engine using custom designed array.
Optical Information Output:	4000lm
Light quality:	>95 CRI Consistently
Colour Temperature:	5700K
Beam Angles:	15°-50°
Electrical Specifications: Voltage:	100 -240 volts AC.
Frequency:	50/60 Hz
Power Factor:	0.97
Consumption:	300W max
Environmental Specifications: Ambient Temp:	0°C ~40°C (operating) / -10°C ~45°C (start-up)
IP Rating:	IP 20 indoor use only
Conformity:	CE Mark
Control Specifications: Control:	On board Menu, RDM, DMX512
Fan mode:	Silent, Auto, Full
DMX Channels:	Dimmer Mode, 1Ch Basic Mode, 3Ch Pro mode, 5Ch
Mechanical Specifications: Power connections:	Neutrik powerCON in- and through
Data connections:	Neutrik 3&5p DMX in- and through
Pole operated:	Available as option
Construction:	Machined Aluminium, sheet metal, moulded engineering grade plastics.
Colour:	Black
Weight:	8,2Kg

Infinity Signature Series

Accessories



Lens for Infinity Profile

TLT- 5° 5° lens tube	200100
TLT-10 10° lens tube	200101
TLT-14 14° lens tube	200102
TLT-19 19° lens tube	200103
TLT-26 26° lens tube	200104
TLT-36 36° lens tube	200105
TLT-50 50° lens tube	200106

HD Lens for Infinity Profile

TLT-19HD 19° HD lens tube	200110
TLT-26HD 26° HD lens tube	200111



Infinity Signature Series Accessories



200140



200141



200250



200123



200130



200131



200134

Zoom Lens for Infinity Profile

TLT-1230 15-35° zoom	200140
TLT-2350 25-50° zoom	200141

Filterframe for Infinity lens tube

Only for 5° lens tube	200120
Only for 10° lens tube	200121
Only for 14°, 19°, 26°, 36°, 50° lens tube	200122

Filterframe for Infinity zoomlens	200123
Filterframe for Infinity Fresnel	200250

Barndoor for Infinity Fresnel	200251
-------------------------------	---------------

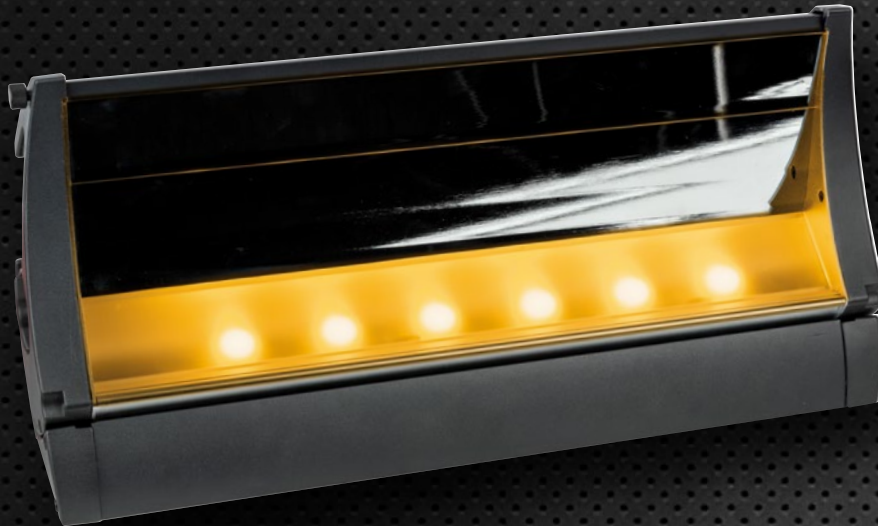
Iris for Infinity Profile

200130	
Gobo holder for Infinity Profile	200131
Pole operation yoke for Profiles	200133
Pole operation yoke for Fresnels	200134
Lens adaptor for Selecon Optics	200132



Infinity TCYC-7 Cyclorama

200300



Infinity TCYC-7 Cyclorama is an extremely bright and powerful luminaire. Equipped with a special high gloss asymmetric mirror, the projection angle is 75° with a very linear drop. A motorized tilt range of 30° ensures easy floor or ceiling focussing. The TCYC shares the same custom designed 7 colour LED array and intelligent software as the TS-260C7 and the TFLD-7. It creates an amazing smooth seamless beam projection for your horizons. Because they are based on same technology combining these 3 coloured luminaires in one setup creates the perfect match when light and colour quality is needed.

Features:

- 300W Lumiled 7 colour LED engine using custom designed array
- CRI > 96 Consistently on full CCT range
- LED Colour Linearity Compensation
- LED Colour Temperature Drift Compensation (on all LEDs)
- Optics Colour Shift compensation
- Colour wheel with 64 spectrum matching Filter gels
- 2000 – 8000K Seamless CCT channel
- RGB, CMY and HSI Colour control
- 16 bit Intelligent high resolution virtual dimming
- Tungsten mode with natural colour drift & timing simulations
- Flicker-Free with selectable PWM by DMX
- RDM allowing for remote setting and recall of information
- Motorized 30° focusing
- 1CH DMX mode for conventional replacement



LED Engine Source:

300W Lumiled 7 colour LED engine using custom designed array.

Optical Information

Output: 6000lm
 Light quality: >96 CRI Consistently (High CRI Mode)
 Colour Temperature: 2000K ~ 8000K
 Beam Angle: asymmetric 75°
 Tilt adjustment: 30° manual and motorized

Electrical Specifications:

Voltage: 100 -240 volts AC.
 Frequency: 50/60 Hz
 Power Factor: 0,96
 Consumption: 310W max

Environmental Specifications:

Ambient Temp: 0°C ~40°C (operating) / -10°C ~45°C (start-up)
 IP Rating: IP 20 indoor use only
 Conformity: CE Mark

Control Specifications:

Control: On board Menu, RDM, DMX512
 Fan mode: Silent, Auto, Full
 Dimmer Mode, 1Ch
 Basic Mode, 6Ch
 Tungsten Mode, 7Ch
 HSI Pro Mode, 11Ch
 RGB Pro Mode, 11Ch
 CMY Pro Mode, 11Ch
 RAW Mode, 21Ch

Mechanical Specifications:

Power connections: Neutrik powerCON in- and through
 Data connections: Neutrik 5p DMX in- and through

Construction:

Machined Aluminium, sheet metal, moulded engineering grade plastics.
 Colour: Black
 Dimensions: 195 x 257 x 566 mm
 Weight: 11,2Kg

Infinity TFLD-7 Floodlight

200400



Features:

- 150W Lumiled 7 colour LED engine using custom designed array
- CRI > 96 Consistently on full CCT range
- LED Colour Linearity Compensation
- LED Colour Temperature Drift Compensation (on all LEDs)
- Optics Colour Shift compensation
- Colour wheel with 64 spectrum matching Filter gels
- 2000 – 8000K Seamless CCT channel
- RGB, CMY and HSI Colour control
- 16 bit Intelligent high resolution virtual dimming
- Tungsten mode with natural colour drift & timing simulations
- Flicker-Free with selectable PWM by DMX
- RDM allowing for remote setting and recall of information
- 1CH DMX mode for conventional replacement

The Infinity TFLD-7 combines a compact, lightweight and versatile design with the already known custom designed 7 colour LED array and intelligent software to create the most sophisticated little floodlight possible. This custom 7 colour array will put out a white with consistently higher CRI value above 96 over the entire CCT range, and easily creates your specials with the built-in virtual scroller with 64 theatrical colours.

The calibration ensures a perfect blend of light true out your theatre, stage or studio. Equipped with 7 different DMX modes, this luminaire is fully compatible with all the TS-260C7 and TCYC-7. Combining these 3 coloured luminaires in one setup creates the perfect match when light and colour quality is needed.



LED Engine Source:	150W Lumiled 7 colour LED engine using custom designed array.
Optical Information	
Output:	3000lm
Light quality:	>96 CRI Consistently (High CRI Mode)
Colour Temperature:	2000K ~ 8000K
Beam Angles:	40°, 60°, 90° (optional)
Tilt adjustment:	170° manual
Electrical Specifications:	
Voltage:	100 -240 volts AC.
Frequency:	50/60 Hz
Power Factor:	0,96
Consumption:	160W max
Environmental Specifications:	
Ambient Temp:	0°C ~40°C (operating) / -10°C ~45°C (start-up)
IP Rating:	IP 20 indoor use only
Conformity:	CE Mark

Control Specifications:	
Control:	On board Menu, RDM, DMX512
Fan mode:	Silent, Auto, Full
DMX Channels:	Dimmer Mode, 1Ch Basic Mode, 5Ch Tungsten Mode, 6Ch HSI Pro Mode, 10Ch RGB Pro Mode, 10Ch CMY Pro Mode, 10Ch RAW Mode, 20Ch
Mechanical Specifications:	
Power connections:	Neutrik powerCON in- and through
Data connections:	Neutrik 3&5p DMX in- and through
Construction:	Machined Aluminium, sheet metal, moulded engineering grade plastics.
Colour:	Black
Dimensions:	316 x 325 x 135 mm
Weight:	5,3Kg

Infinity Chimp Moving Light Controller

Ultimate user-friendliness

Based on standard programming syntaxes with encoders and hard-keys, these compact controllers offer access to familiar screens and will allow you to quickly program a great show.

Regardless of the application - touring, rental, theatre, multipurpose venue, education, or house of worship - a Chimp Light Controller provides you with all the necessary tools.

Smart, in-house designed software, industry-standard syntaxes, and easy-to-use screens: the Chimp Light Controller will enable you to program your best show in a matter of minutes.

The Chimp 100 can connect up to two external touchscreens and the Chimp 300 houses a 22" full HD touchscreen and the possibility to connect one extra external touchscreen.

Programming

- 4 Encoders
- Familiar keys and numeric keypad
- Colour picker
- Filter libraries by Lee, Rosco, and Apollo
- Gobo Picker
- User-definable groups
- User-definable presets
- Effects engine
- Fan functions
- Built-in Fixture library

Playback

- 10 faders with multiple pages
- Go and Pause/Reverse keys
- 10 executer keys with multiple pages
- 4 user-definable master faders
- Cue list screen



C.H.I.M.P



CLEVER HOW I MANAGE PROGRAMMING

Infinity Chimp 100.G2

55004 2 Universe DMX Console incl Wireless Transmitter

WIRELESS SOLUTION
MADE IN SWEDEN



Infinity® Chimp 100 Light Controller

Based on standard programming syntaxes with encoders and hard-keys, these compact controllers offer access to familiar screens(*) and will allow you to quickly program a great show. Regardless of the application - touring, rental, theatre, multipurpose venue, education, or house of worship - a Chimp Light Controller provides you with all the necessary tools. Smart, in-house designed software, industry-standard syntaxes, and easy-to-use screens. The Chimp Light Controller will enable you to program your best show in a matter of minutes. The Chimp 100.G2 is equipped with a Wireless Solutions G5 single universe transmitter. This extra feature will provide an higher level of flexibility and an extra addition of creativity to events aided by this feature. The latest technologies such as the Datasafe Technology and Adaptive Frequency Hopping protocol ensure maximum reliable wireless connection with error correction and super low latency. Distances in line of sight with the included 5dBi Antenna are reachable up to 1000m, way beyond normal cable reach.

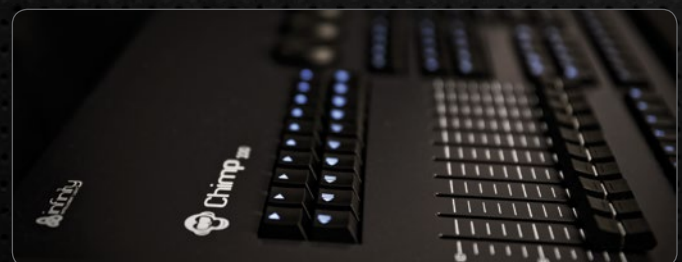
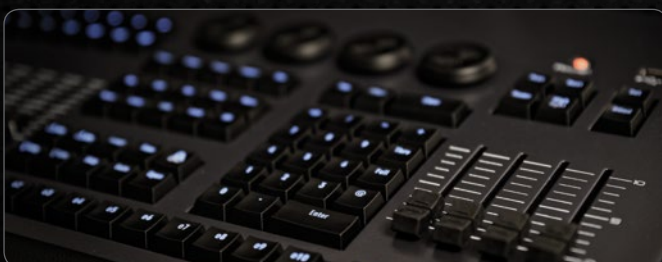
Programming

- 4 Encoders
- Familiar keys and numeric keypad
- Colour picker
- Filter libraries by Lee, Rosco, and Apollo
- Gobo Picker
- User-definable groups
- User-definable presets
- Effects engine
- Fan functions
- Built-in Fixture library

Playback

- 10 faders with multiple pages
- Go and Pause/Reverse keys
- 10 executor keys with multiple pages
- 4 user-definable master faders
- Cue list screen

(*) The Chimp 100 can connect up to two external touchscreens!





- 55001** Dustcover for Chimp 100
- 55002** Customizable Dustcover for Chimp 100

The Infinity® Chimp Team has the possibility to customize the dedicated Chimp dustcovers. A predefined space is available for adding your company logo. For further information and questions please contact your sales agent.



Infinity Chimp 300.G2

55014 4 Universe DMX Console incl Wireless Transmitter

Infinity® Chimp 300 Light Controller

Based on standard programming syntaxes with encoders and hard-keys, these compact controllers offer access to familiar screens(*) and will allow you to quickly program a great show. Regardless of the application - touring, rental, theatre, multipurpose venue, education, or house of worship - a Chimp Light Controller provides you with all the necessary tools. Smart, in-house designed software, industry-standard syntaxes, and easy-to-use screens. The Chimp Light Controller will enable you to program your best show in a matter of minutes. The Chimp 300.G2 is equipped with a Wireless Solutions G5 Single Universe transmitter, which gives you even more flexibility. The latest technologies, such as Datasafe Technology and the Adaptive Frequency Hopping protocol, ensure a highly reliable wireless connection with error correction and extremely little latency. Distances up to 1000m (field of view) can be achieved with the included 5dBi antenna; far beyond normal cable ranges.

(*) The Chimp 300.G2 is equipped with a new and improved 22" full HD touchscreen with the possibility to connect one extra external touchscreen.

Programming

- 4 Encoders
- Familiar keys and numeric keypad
- Colour picker
- Filter libraries by Lee, Rosco, and Apollo
- Gobo Picker
- User-definable groups
- User-definable presets
- Effects engine
- Fan functions
- Built-in Fixture library Playback
- 10 faders with multiple pages
- Go and Pause/Reverse keys
- 10 executor keys with multiple pages
- 4 user-definable master faders
- Cue list screen





55011 Dustcover for Chimp 300

55012 Customizable Dustcover for Chimp 300

The Infinity® Chimp Team has the possibility to customize the dedicated Chimp dustcovers. A predefined space is available for adding your company logo. For further information and questions please contact your sales agent.



Infinity Banana Wing

55020 2 Universe Expansion Wing



The Banana Wing is the ideal tool for extending the possibilities and flexibility of the Infinity Chimp consoles. The Banana Wing offers operators an extra 20 playback faders and will release 2 extra universes plus 100 extra fixtures on top of your Chimp's capabilities. The console will recognize the presence of the wing and reconfigure the second external monitor so the stored playbacks will be visible for the operator.



55021 Dustcover for Banana Wing





Chimp 100.G2

WIRELESS SOLUTION
MADE IN SWEDEN



55004 2 Universe DMX Console incl Wireless Transmitter

Technical Features:

- Familiar keys, numeric keypad and 4 Encoders
- 10 Playback faders with Go, Pause/Reverse, Flash keys on multiple pages
- 10 Executer/Flash keys on multiple pages
- Color picker, Swatchbook by Lee, Rosco and Apollo Filters
- Gobo Picker
- User definable groups and presets
- User definable display layout
- 4 user definable master faders
- Effects engine
- Fan functions on all attributes
- Built-in Fixture builder
- Cue list screen

Connectors

- 2 x DMX 5-pin opto-isolated in/outs (RDM ready)
- RP-SMA W-DMX antenna output
- Ethernet/Artnet
- 2x HDMI monitor out
- Midi In/Thru/Out 5-pin DIN
- Audio Input 3-pin XLR
- IEC Power Supply Input
- 2 x Dimmable Desklight outputs 3-pin XLR
- 3 x USB-B connectors

Software

- 2 universe 1024 channels DMX
- 100 Fixtures
- 5000 memories
- 200 memory stacks
- 100 groups
- 9 x 100 presets (position, color, beam, effects, etc.)
- Command line interface
- Output visualizer
- Atlabase Fixture library > 50.000 fixtures
- Tracking and non-tracking options

Physical

Housing: Metal & flame-retardant plastic side covers
 Dimensions: 400 x 575 x 160mm (LxWxH)
 Weight: 9Kg
 Ambient Temp. Range: 0 ~ 35°C
 Storage Temp. Range: -5 ~ 45°C



Chimp 300.G2

WIRELESS SOLUTION
MADE IN SWEDEN



55014 4 Universe DMX Console incl Wireless Transmitter

Technical Features:Features

- Familiar keys, numeric keypad and 4 Encoders
- 10 Playback faders with Go, Pause/Reverse, Flash keys on multiple pages
- 10 Executer/Flash keys on multiple pages
- Color picker, Swatchbook by Lee, Rosco and Apollo Filters
- Gobo Picker
- User definable groups and presets
- User definable display layout
- 4 user definable master faders
- Effects engine
- Fan functions on all attributes
- Built in Fixture library and Fixture builder
- Cue list screen

Connectors

- 4 x DMX 5-pin opto-isolated in/outs (RDM ready)
- RP-SMA W-DMX antenna output
- Ethernet/Artnet
- HDMI monitor out
- Midi In/Thru/Out 5-pin DIN
- Audio/SMPTE/LTC Input 3-pin XLR
- IEC Power Supply Input
- 2 x Dimmable Desklight outputs 3-pin XLR
- 2 x USB-B connectors

Software

- 4 universe 2048 channels DMX
- 300 Fixtures
- 10000 memories
- 400 memory stacks
- 100 groups
- 9 x 100 presets (position, color, beam, effects, etc.)
- Command line interface
- Output visualizer
- Atlabase Fixture library > 50.000 fixtures
- Tracking and non-tracking options

Physical

Display: 22 inch 1920x1080 Hull HD
 Touch: Digital resistive touch
 Housing: Metal & flame-retardant plastic side covers
 Dimensions: 647 x 575 x 279mm (LxWxH)
 Weight: 18Kg
 Ambient Temp. Range: 0 ~ 35°C
 Storage Temp. Range: -5 ~ 45°C



Banana Wing

55020 2 Universe Expansion Wing

Technical Features:

- Physical
- Connections: 2 x DMX 5-pin opto-isolated in/outs (RDM ready)
1x USB-B connector
1x USB-A connector
IEC Power Supply Input
- Housing: Metal & flame-retardant plastic side covers
- Dimensions: 400 x 490 x 160mm (LxWxH)
- Input voltage: 100-240VAC, 50/60Hz (auto ranging)
- Power consumption: 25W
- Weight: 4Kg
- Ambient Temp. Range: -0 ~ 40°C

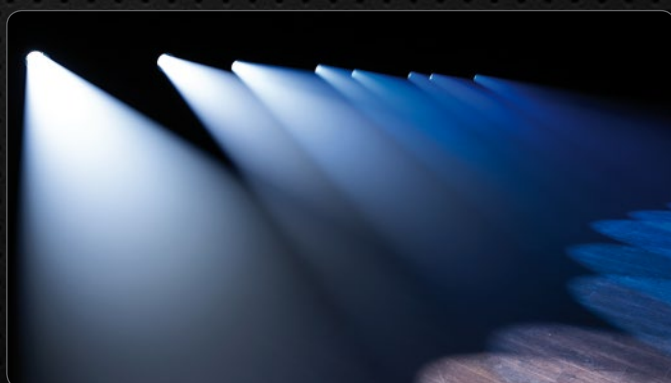




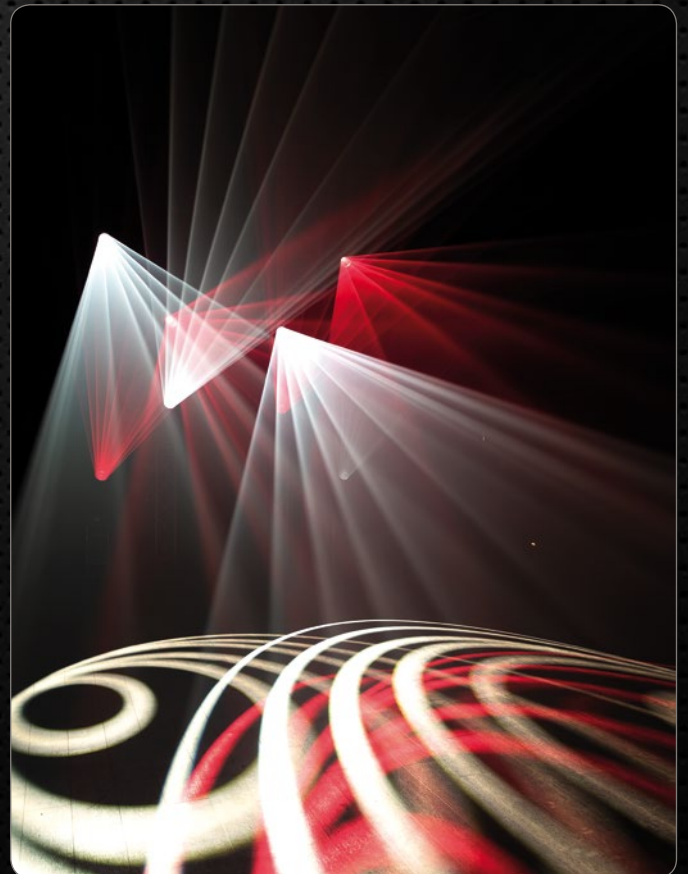


Infinity FURION SERIES

For the Furion Series, engineered by professionals for professionals, Infinity developed a new advanced technology to receive the best possible performance and motor control with which you will be able to produce very fast as well as very slow, precise movements. You do not have to choose between fast or slow mode anymore. All Furion fixtures are equipped with a gravity sensor which controls not only the orientation within the menu but, if so desired, also inverts automatically the Pan movement. A very nifty setting for set-ups where various units are being used standing up or rigged down. Furion excels in a state of the art 16-bit LED dimming which makes flicker-free dimming until the lowest value possible but also recognizes when the user needs an instant flash. Through 16-bit technology, positioning prisms and gobos becomes very precise, also controlling all the dynamic effects these units have to offer is a breeze. A user friendly, battery backed-up, menu with touchscreen ensures easy addressing for arranging all the desired settings. Some of the features which can be found on every Furion model are: WMDX by Wireless Solution, Artnet, sACN & RDN. Furion stays connected through the use of Ethernet in- and outputs, sturdy Neutrik Powercon True1 and Neutrik 5p DMX connectors. User defined channel modes are also standard features on each unit. You can even run a quick diagnostic check while the unit itself is still in its flightcase. If you are looking for a real workhorse which delivers every single time and looks amazing while doing it, its name is Furion.







Infinity S201 Spot

41505 Furion Series

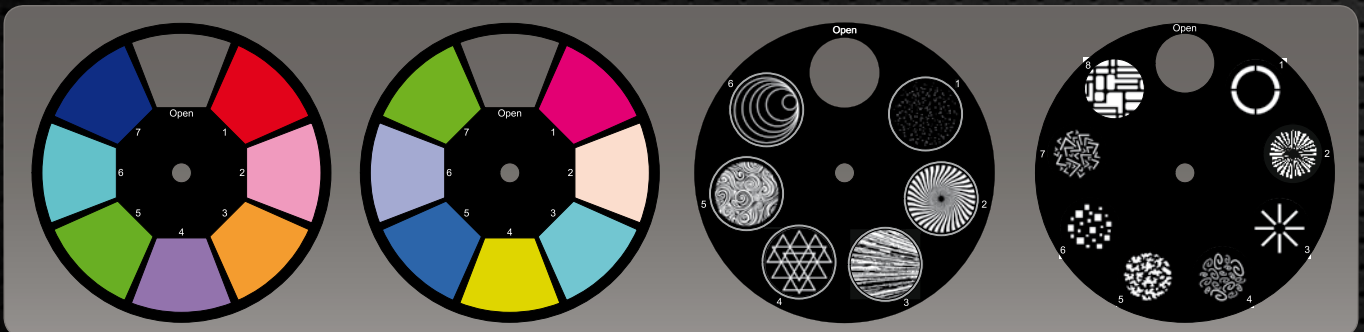
Presenting: the Furion S201 Spot. With a 1:2.5 zoom ratio from 12° to 30°. Featuring a double colourwheel with a grand total of 14 colours. If you want to make the most amazing mid-air effects or project the wildest visuals, a marvelous goboset of 6 rotating glass and 8 fixed metal gobos is at your service. Equipped with Digital Motion FX to generate effects on top of the gobo set for even more dramatic projections.

The optics are top notch, extremely fast and precise to ensure the best morphing possibilities. With the auto focus function your projection will always be crystal clear. The Furion S201 Spot is capable of very fast movements but will also stay very smooth while slowing down and even with abrupt stops.

Features:

- 1:2.5 Zoomrange 12 – 30°
- 3-facet rotating prism
- Fixture orientated auto pan invert
- On-board WDMX by WDMX Sweden

WIRELESS SOLUTION
MADE IN SWEDEN







Infinity S401 Spot

41506 Furion Series

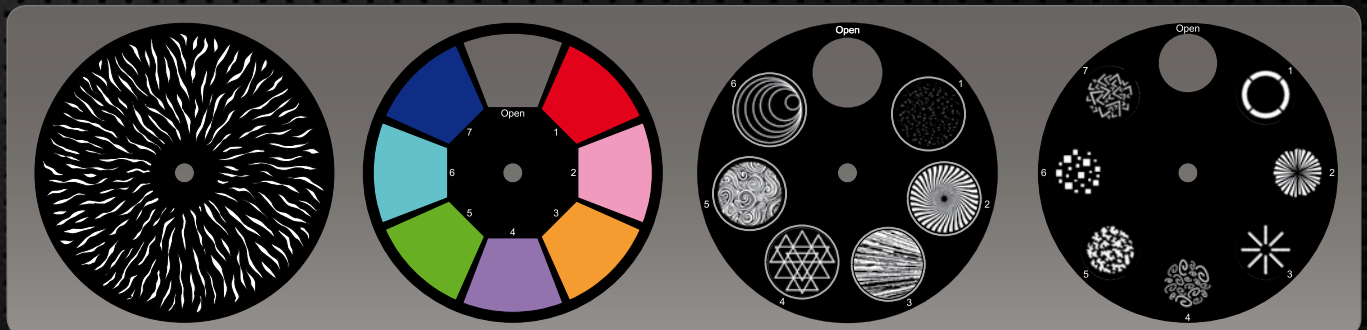
The Furion S401 offers a 5:1 ratio zoom range from 6° to 30°. CMY colour mixing with CTO incorporated produces the perfect colourmix very fast and extremely precise. Take into account the separate colourwheel and you will have a wide array of colours to choose from. User friendly CMY macros are one of the standard features on the Furion S401 and are easy to program. The bi-directional continuous rotating animation-wheel, combined with Digital Motion FX, 6 glass gobos and 7 metal gobos, creates awesome projections or mid-air effects with the only limit being your imagination.

This spot is a true powerhouse which produces a razor-sharp beam with clear visuals. Switching from fast movements to smooth moves is no issue for the Furion S401 Spot.

Features:

- 1:5 Zoomrange 6 – 30°
- 16 bit prism & gobo index
- CMY + CTO Colourmix system
- Continuous Bi-rotating Animation Wheel
- On-board WDMX by WDMX Sweden

WIRELESS SOLUTION
MADE IN SWEDEN



Infinity S601 Profile

41507 Furion Series

Top of the bill of our Infinity-family and truly the Furion flagship, is the Furion S601. A full feature movinghead where the most thinkable options are practically standard. One of these exceptional features are four very precise and separate controllable blades which can be rotated plus and minus 45°. If you need to create various shapes very fast you can use the macros which have already been integrated.

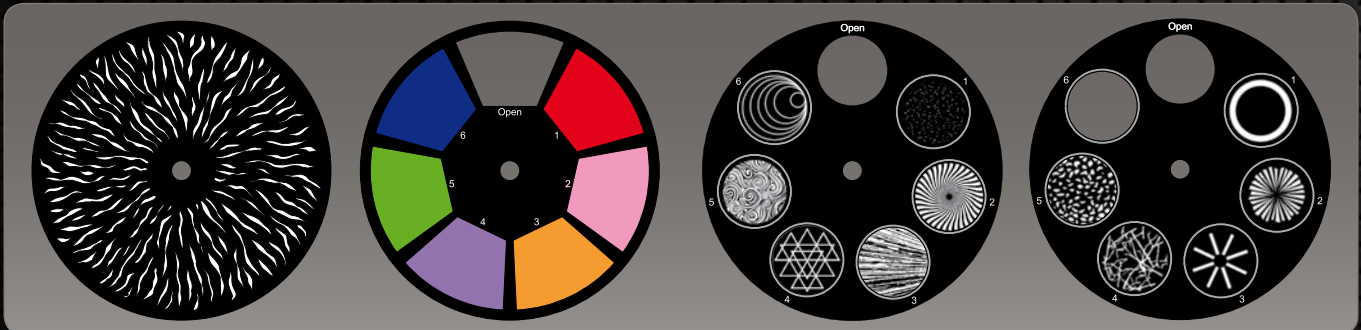
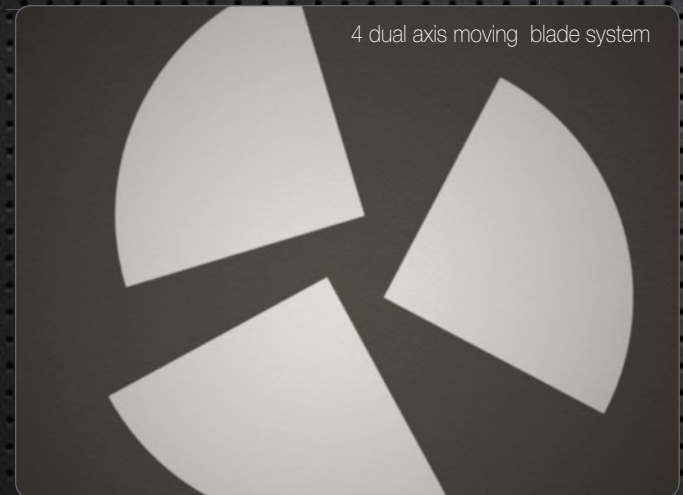
The Furion S601 is designed to produce a collimated beam with virtually no divergence in your custom created shapes. The 7:1 zoom ratio from 6,5° to 45°, the 2 rotating gobowheels with a total of 11 glass gobos plus auto focus guarantee well-defined, crystal clear projections and the morphing possibilities leave nothing to be desired.

Choosing the right colour is easy because of the CMY + CTO module in combination with the separate colourwheel. All these features and more, like Digital Motion FX and the continuous bi-rotating animation-wheel offer the light designer endless possibilities to put his imagination to work and create the most dynamic and awesome lightshow ever.

Features:

- 1:7 Zoomrange 6,5 – 45°
- 500W LED Source
- CMY + CTO Colourmix system
- Continuous Bi-rotating Animation Wheel
- 4 dual axis moving blade system

WIRELESS SOLUTION
MADE IN SWEDEN





Infinity B401 Beam

41533 Furion Series

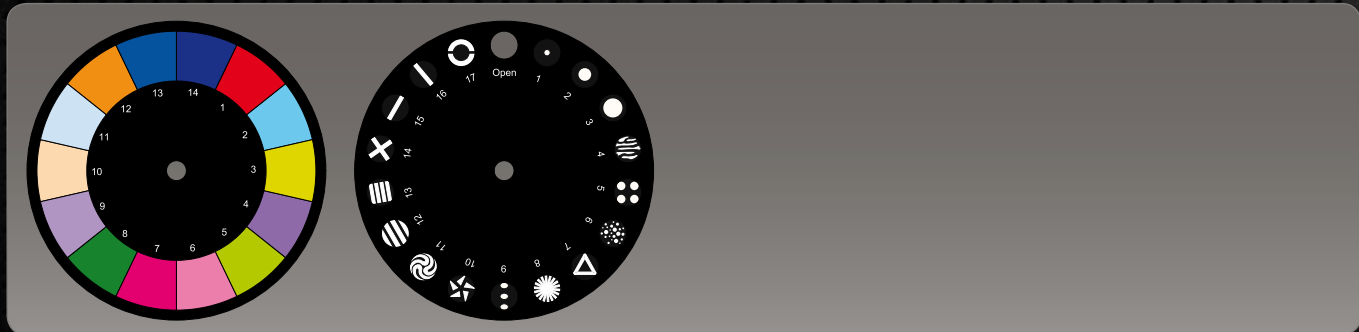
The latest addition to the Infinity Furion family, the Infinity Furion B401 Beam. A versatile moving head with a powerful Osram Sirius HRI 230W 7R as light source. Like the rest of the family the B401 has been equipped with extremely precise and fast motors which deliver the 4° beam every time. The Furion B401 is equipped with 19 metal gobos which create awesome effects by using the 2 prisms.

The most interesting feature which truly defines the Furion B401 is the colour bump-wheel. The colour bump-wheel brings the total of dichroic filters up to 14 + white. With this quantity switching between different single colours, creating a vast amount of split colours or bump colours is very easy, tremendously quick and accurate. The 14 dichroic colours in the Furion B401 have no fixed positions which make them very flexible in generating the required colour in no time. Besides having the choice to be able to bump between colours, the amount of white visible in the beam can also be determined.

Features:

- Multiple Colour-bump possibility
- Prism Overlay
- Frost filter
- Fast movement through high torque motors
- On-Board W-DMX

WIRELESS SOLUTION
MADE IN SWEDEN





S201 Spot

41505 Furion Series



Output
Lux @ 5m 12°: 11345
Lux @ 5m 30°: 2296
Beam Angle: 12° - 30°
Light Source: 150W White LED (LumiEngin)
Colour temperature: 7500K

Electrical
Input Voltage: 100-240VAC, 50/60Hz
Power consumption: 330W max. at full output

Control
On-Board: Battery powered fixture orientated touch display
Mode: DMX, Stand Alone, Manual
Control Protocol: DMX, WDMX, RDM, sACN, Art-Net
Control Personality: Advanced /Basic /User
Wireless DMX: Wireless Solutions Sweden

Optical system
Dimmer: 16Bit, 0-100%
Selectable PWM: 0,6 / 1,5 / 2 / 4 / 6 / 15 kHz
Strobe: 0-20Hz
Focus: Motorized, autofocus
Zoom: 8 or 16 Bit Motorized
Prism: 3-facet circular rotating prism
Animation: Digital motion FX

Movement
Pan: 540°
Tilt: 270°
Pan/Tilt resolution: 16 bit
Special: Pan invert depending on fixture orientation

Gobos & Colours
Gobowheel 1: Rotating , 6 Glass
Gobowheel 2: Static, 8 Metal
Gobo functions: Gobo-flow effect, Gobo shake
Gobo Rotation: Bi-directional
Gobo Index: 8 or 16 Bit
Gobo inner diameter: 22.5 mm
Gobo outer diameter: 25.8 mm
Colourwheel 1: 7 dichroic-filters + white
Colourwheel 2: 7 dichroic-filters + white
Colour functions: Split colours, Rainbow-flow effect

Physical
Colour: Black
Housing: Metal & Flame-retardant plastic
Data Connection: Neutrik XLR 5p & RJ-45 in- & output
Power connection: Neutrik Powercon True1 in- & output
Dimensions (WxDxH): 285 x 390 x 570 mm
Weight: 20.30Kg

Certification and Safety
Certification: CE
Max. ambient Temp.: 40°C

S401 Spot

41506 Furion Series



Output
Lux @ 5m 6°: 34442
Lux @ 5m 30°: 2205
Beam Angle: 6° - 30°
Light Source: 350W White LED
Color temperature: 7500K

Electrical
Input Voltage: 100-240VAC, 50/60Hz
Power consumption: 610W max. at full output

Control
On-Board: Battery powered fixture orientated touch display
Mode: DMX, Stand Alone, Manual
Control Protocol: DMX, WDMX, RDM, sACN, Art-Net
Control Personality: Advanced /Basic /User
Wireless DMX: Wireless Solutions Sweden

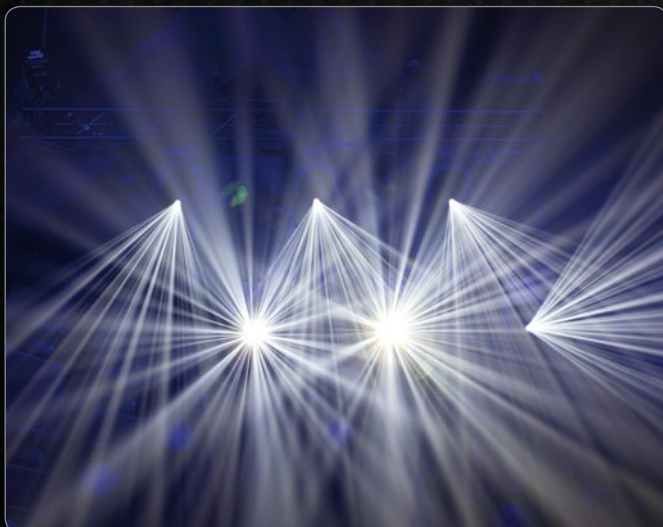
Optical system
Dimmer: 16Bit, 0-100%
Selectable PWM: 0,6 / 1,5 / 2 / 4 / 6 / 15 kHz
Strobe: 0-20Hz
Focus: Motorized, autofocus
Iris: Motorized 0-100%
Zoom: 8 or 16 Bit Motorized
Prism: 3-facet circular & 5 facet linear rotating prisms
Frost filter: Yes
Animation: Continuous bi-rotating flame wheel & Digital motion FX

Movement
Pan: 540°
Tilt: 270°
Pan/Tilt resolution: 16 bit
Special: Pan invert depending on fixture orientation

Gobos & Colors
Gobowheel 1: Rotating , 6 Glass
Gobowheel 2: Static, 7 Metal
Gobo functions: Gobo-flow effect, Gobo shake
Gobo Rotation: Bi-directional
Gobo Index: 8 or 16 Bit
Gobo inner diameter: 22.5 mm
Gobo outer diameter: 25.8 mm
Colorwheel: 7 dichroic-filters + white
CMY: 0-100%
CTO: 0-100%
Colour functions: Split colours, Rainbow-flow effect, CMY Macros

Physical
Colour: Black
Housing: Metal & Flame-retardant plastic
Data Connection: Neutrik XLR 5p & RJ-45 in- & output
Power connection: Neutrik Powercon True1 in- & output
Dimensions (WxDxH): 285 x 390 x 674 mm
Weight: 29Kg

Certification and Safety
Certification: CE
Max. ambient Temp.: 40°C



S601 Profile

41507 Furion Series



Output	
Lux @ 5m 6,5°:	29712
Lux @ 5m 45°:	1124
Beam Angle:	6,5° - 45°
Light Source:	500W White LED
Colour temperature:	7500K
Electrical	
Input Voltage:	100-240VAC, 50/60Hz
Power consumption:	730W max. at full output
Control	
On-Board:	Battery powered fixture orientated touch display
Mode:	DMX, Stand Alone, Manual
Control Protocol:	DMX, WDMX, RDM, sACN, Art-Net
Control Personality:	Advanced /Basic /User
Wireless DMX:	Wireless Solutions Sweden
Optical system	
Dimmer:	16Bit, 0-100%
Selectable PWM:	0,6 / 1,5 / 2 / 4 / 6 / 15 kHz
Strobe:	0-20Hz
Focus:	Motorized, autofocus
Iris:	Motorized 0-100%
Zoom:	8 or 16 Bit Motorized
Prism:	3-facet circular & 5 facet linear rotating prisms
Frost filter:	Yes
Animation:	Continuous Bi-rotating Flame Wheel & Digital motion FX
Framing System	
Shutters:	4 dual axis moving blades
System rotation:	+/- 45°
Resolution:	16 Bit
Movement	
Pan:	540°
Tilt:	270°
Pan/Tilt resolution:	16 bit
Special:	Fixture orientated auto pan invert
Gobos & Colors	
Gobowheel 1:	Rotating, 6 Glass
Gobowheel 2:	Rotating, 5 Glass
Gobo functions:	Gobo-flow effect, Gobo shake
Gobo Rotation:	Bi-directional
Gobo Index:	8 or 16 Bit
Gobo 1 inner diameter:	28 mm
Gobo 2 inner diameter:	28 mm
Gobo outer diameter:	31.8 mm
Colourwheel:	6 dichroic-filters + white
CMY:	0-100%
CTO:	0-100%
Colour functions:	Split colours, Rainbow-flow effect, CMY Macros
Physical	
Colour:	Black
Housing:	Metal & Flame-retardant plastic
Data Connection:	Neutrik XLR 5p & RJ-45 in- & output
Power connection:	Neutrik Powercon True1 in- & output
Dimensions (WxDxH):	290 x 420 x 748 mm
Weight:	35.75Kg
Certification and Safety	
Certification:	CE
Max. ambient Temp.:	40°C

B401 Beam

41533 Furion Series



Lamp	
Light Source:	Osram Sirius HRI 230W (7R)
Lamp socket:	E20.6
Colour temp.:	7600K
Beam angle:	4°
Output:	7800 Lumen
Electrical	
Input Voltage:	100-240 VAC
Power consumption:	402W
Control	
On-Board:	Battery powered full colour display including gravity sensor
Battery lifetime:	max 30 days (full charge)
Mode:	DMX, Auto & Master/Slave
Control Protocol:	DMX / Artnet / WDMX / sACN
Control Personality:	Advanced 23ch / Basic 18ch
Wireless DMX:	On-Board
Optical system	
Dimmer:	0-100% Mechanical
Shutter:	0-20Hz
Focus:	Motorized
Prism 1:	5-facet linear
Prism 2:	16-facet rotating
Frost:	Yes
Movement	
Pan:	540°
Tilt:	270°
Pan/Tilt resolution:	16 bit
Special:	Pan/ Tilt, Colour, Gobo change blackout, User-selectable Pan & Tilt ranges, 540°/360°/180°/90°, Reverse Pan / Tilt movement
Gobos & Colours	
Gobowheel:	17 Metal gobos + Open
Gobo functions:	Gobo-flow effect, Gobo shake
Colours:	14 dichroic-filters + white
Colour functions:	Bump colours, Split colours, Rainbow-flow effect
Physical	
Colour:	Black
Housing:	Metal & Flame-retardant plastic
Screws:	Quick lock
Fixture Connection:	XLR 5p Data in/out, Powercon True1 in/out, RJ45 in/out
Dimensions (WxDxH):	550 x 400 x 465 mm
Weight:	21Kg
Certification and Safety	
Certification:	CE
Max. ambient Temp.:	40°C
Minimum distance objects:	12m



iS-100

41500 100W LED Spot



Output
Lux @ 1m: 52400
Beam Angle: 15°
Light Source: 100W White LED (LumiEngine)

Electrical
Input Voltage: 100-240VAC, 50/60Hz
Power consumption: 220W max. at full output

Control
On-Board: Battery powered full color display including gravity sensor
Battery lifetime: max 30 days (full charge)
Mode: DMX, Auto & Master/Slave
Control Protocol: DMX512
Control Personality: Advanced 19ch /Basic 16ch
Wireless DMX: optional available

Optical system
Dimmer: 0-100%
Strobe: 0-20Hz
Focus: Motorized
Iris: Motorized
Prism: rotating 3-facet prism

Movement
Pan: 540°
Tilt: 270°
Pan/Tilt resolution: 16 bit
Special: Pan/ Tilt, Color,Gobo change blackout,User-selectable Pan & Tilt ranges, 540°/360°/180°, Reverse Pan / Tilt movement

Gobos & Colors
Gobowheel 1 Rotating: 2 glass + 5 metal gobos (replaceable)
Gobowheel 2: 8 metal gobos
Gobo functions: Gobo-flow effect,Gobo shake
Rotation: Bi-directional
Gobo inner diameter: 23mm
Gobo outer diameter: 26,5mm
Colors: 8 dichroic-filters + white
Color functions: Split colors, Rainbow-flow effect

Physical
Color: Black
Housing: Metal & Flame-retardant plastic
Fixture Connection: XLR 3&5p Data in/out, Powercon power input
Dimensions (WxDxH): 303 x 306 x 485 mm
Weight: 16,5Kg

Certification and Safety
Certification: CE
Max. ambient Temp.: 40°C

iS-200

41501 200W LED Spot



Output
Lux @ 1m: 78100
Beam Angle: 17°
Light Source: 200W White LED (LumiEngin)
Source Temperature: 6000K

Electrical
Input Voltage: 100-240VAC, 50/60Hz
Power consumption: 370W max. at full output

Control
On-Board: Battery powered full color display including gravity sensor
Battery lifetime: max 30 days (full charge)
Mode: DMX, Auto & Master/Slave
Control Protocol: DMX512
Control Personality: Advanced 21ch /Basic 18ch
Wireless DMX: optional available

Optical system
Dimmer: 0-100%
Strobe: 0-20Hz
Focus: Motorized
Iris: Motorized
Prism: 3-facet rotating prism
Frost filter: Yes

Movement
Pan: 540°
Tilt: 270°
Pan/Tilt resolution: 16 bit
Special: Pan/ Tilt, Color,Gobo change blackout, User-selectable Pan & Tilt ranges, 540°/360°/180°, Reverse Pan / Tilt movement

Gobos & Colors
Gobowheel 1 Rotating: 2 glass + 5 metal gobos (replaceable)
Gobowheel 2: 8 metal gobos
Gobo functions: Gobo-flow effect,Gobo shake
Rotation: Bi-directional
Gobo inner diameter glass 1: 21mm
Gobo outer diameter glass 1: 27,7mm
Gobo inner diameter glass 2: 21mm
Gobo outer diameter glass 2: 26,7mm
Gobo inner diameter metal: 21mm
Gobo outer diameter metal: 28,7mm
Colorwheel 1: 7 dichroic-filters + white
Colorwheel 2: 7 dichroic-filters + white
Color functions: Split colors, Rainbow-flow effect

Physical
Color: Black
Housing: Metal & Flame-retardant plastic
Fixture Connection: XLR 3&5p Data in/out, Powercon in- & output
Dimensions (WxDxH): 346 x 417 x 551 mm
Weight: 21Kg

Certification and Safety
Certification: CE
Max. ambient Temp.: 40°C



iS-250

41502 250W LED Spot



Output
 Lux @ 1m: 102400 (12°)
 Beam Angle: 12° - 27°
 Light Source: 250W White LED (LumiEngin)
 Source Temperature: 7000K

Electrical
 Input Voltage: 100-240VAC, 50/60Hz
 Power consumption: 420W max. at full output

Control
 On-Board: Battery powered full color display including gravity sensor
 Battery lifetime: max 30 days (full charge)
 Mode: DMX, Auto & Master/Slave
 Control Protocol: DMX512
 Control Personality: Advanced 27ch /Basic 21ch
 Wireless DMX: optional available

Optical system
 Dimmer: 0-100%
 Strobe: 0-20Hz
 Focus: Motorized
 Iris: Motorized
 Prism: 3-facet rotating prism
 Frost filter: Yes

Movement
 Pan: 540°
 Tilt: 270°
 Pan/Tilt resolution: 16 bit
 Special: Pan/ Tilt, Color,Gobo change blackout, User-selectable Pan & Tilt ranges, 540°/360°/180°, Reverse Pan / Tilt movement

Gobos & Colors
 Gobowheel 1 Rotating: 2 glass + 5 metal gobos (replaceable)
 Gobowheel 2 Static: 8 metal gobos
 Gobo functions: Gobo-flow effect,Gobo shake
 Rotation: Bi-directional
 Gobo inner diameter glass 1: 21mm
 Gobo outer diameter glass 1: 27.7mm
 Gobo inner diameter glass 2: 21mm
 Gobo outer diameter glass 2: 26.7mm
 Gobo inner diameter metal: 21mm
 Gobo outer diameter metal: 28.7mm
 Colorwheel 1: 7 dichroic-filters + white
 Colorwheel 2: 7 dichroic-filters + white
 Color functions: Split colors, Rainbow-flow effect

Physical
 Color: Black
 Housing: Metal & Flame-retardant plastic
 Fixture Connection: XLR 3&5p Data in/out, Powercon in- & output
 Dimensions (WxDxH): 346 x 420 x 582 mm
 Weight: 25.5Kg

Certification and Safety
 Certification: CE
 Max. ambient Temp.: 40°C

iS-400

41504 440W LED Spot



Output
 Lux @ 5m: 16000 (13°)
 Beam Angle: 13° - 37°
 Light Source: 440W White LED (LumiEngin)

Electrical
 Input Voltage: 100-240VAC, 50/60Hz
 Power consumption: 650W max. at full output

Control
 On-Board: Battery powered full color display including gravity sensor
 Battery lifetime: max 30 days (full charge)
 Mode: DMX, Auto & Master/Slave
 Control Protocol: DMX512, Artnet
 Control Personality: Advanced 38ch /Basic 28ch
 Wireless DMX: optional available

Optical system
 Dimmer: 0-100%
 Strobe: 0-20Hz
 Focus: Motorized autofocus
 Iris: Motorized 0-100%
 Zoom: Motorized
 Prism: 3-facet rotating prism
 Frost filter: Yes
 Animation: Digital motion FX

Movement
 Pan: 540°
 Tilt: 270°
 Pan/Tilt resolution: 16 bit
 Speed / Smooth
 Special: Pan/ Tilt, Color,Gobo change blackout, User-selectable Pan & Tilt ranges, 540°/360°/180°, 270°/180°/90°, Reverse Pan / Tilt movement

Gobos & Colors
 Rotating Gobowheel 1: 6 Glass
 Rotating Gobowheel 2: 6 Glass
 Gobo functions: Gobo-flow effect,Gobo shake
 Rotation: Bi-directional
 Gobo 1 inner diameter: 28mm
 Gobo 2 inner diameter: 26mm
 Gobo outer diameter: 32mm
 Colorwheel: 7 dichroic-filters + white
 CMY: 0-100%
 CTO: 0-100%
 Color functions: Split colors, Rainbow-flow effect, CMY Macros

Physical
 Color: Black
 Housing: Metal & Flame-retardant plastic
 Data Connection: XLR 3&5p & RJ-45 in- & output
 Power connection: Powercon input
 Dimensions (WxDxH): 346 x 417 x 616 mm
 Weight: 35Kg

Certification and Safety
 Certification: CE
 Max. ambient Temp.: 40°C





Infinity iW-340 RDM

41525 RGBW Wash, Electronic Zoom

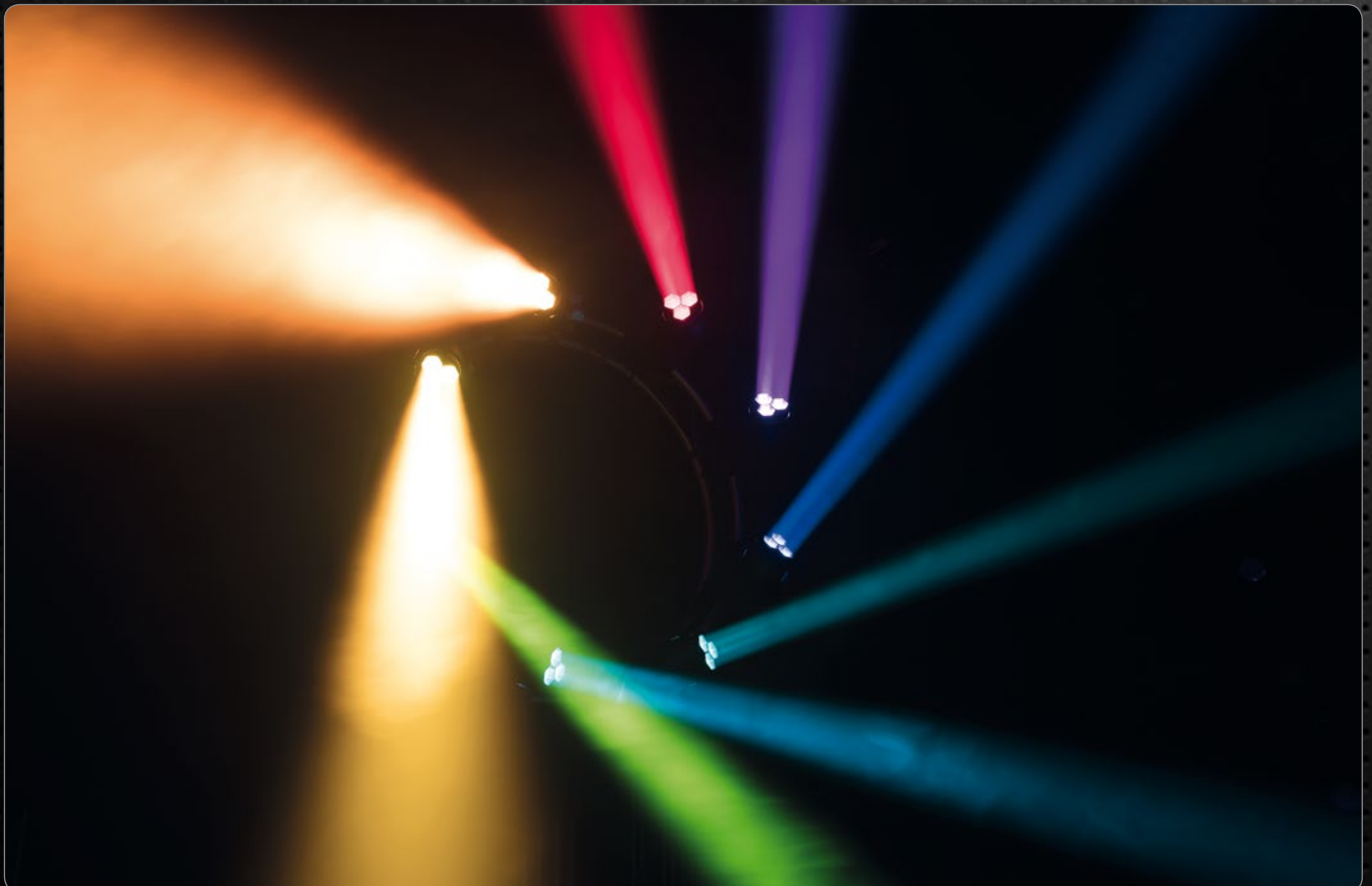
The Infinity iW-340, iW-740 and iW-1240 wash lights are excellent additions to the Infinity Intelligent Light series for professional entertainment purposes. With a zoom range of 4.5° - 36°, these moving heads can be used both as a wash light and as a powerful LED beam.

The iW-340 RDM is the smallest fixture in this series and equipped with 3 Osram 40W O-Star RGBW LEDs for reliable performance and excellent colors.

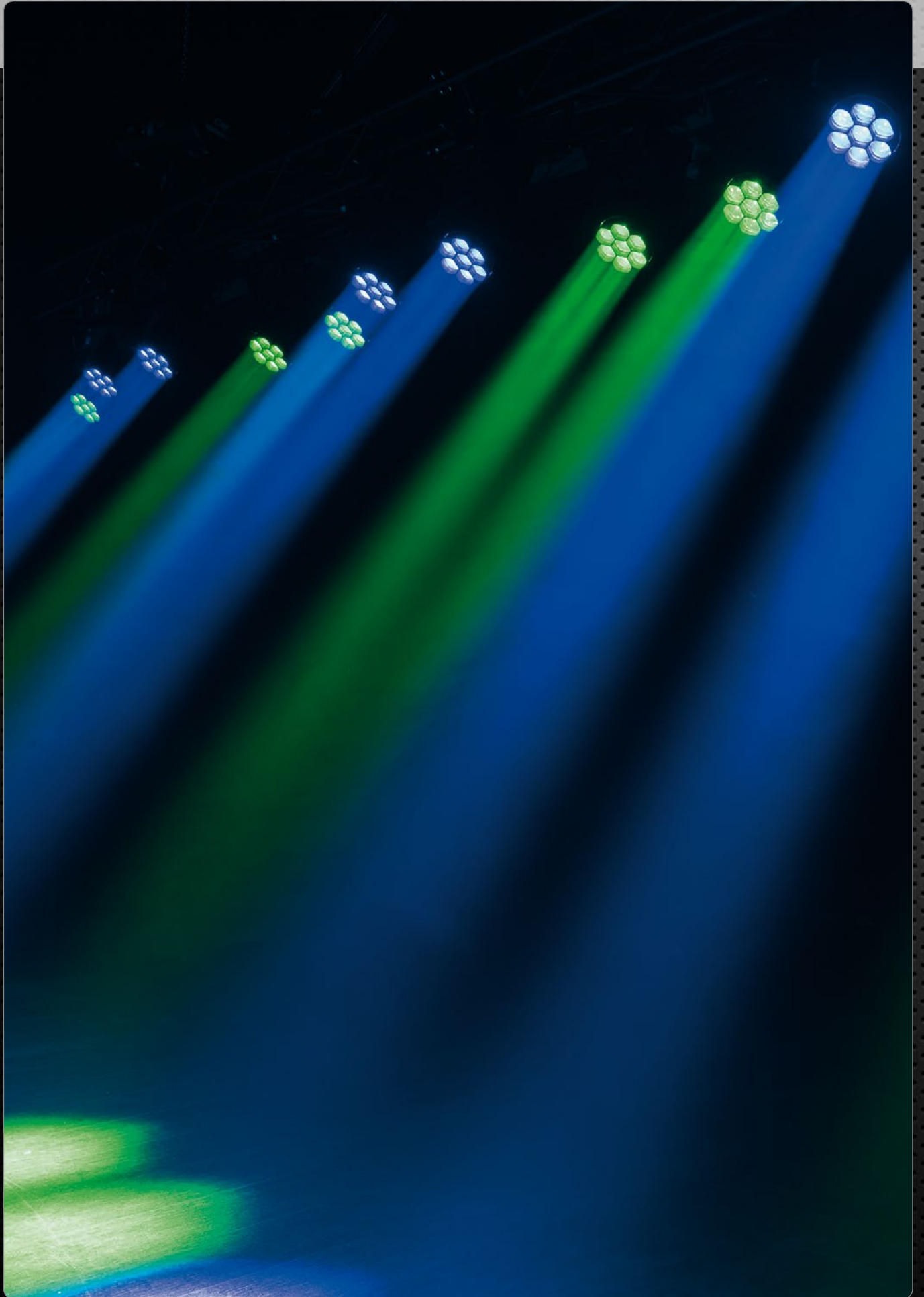
Individual pixels are controlled via DMX / Artnet or just select macro patterns to transform it into an exciting effect light. Built-in background LEDs add an additional layer to the already very extensive creative possibilities. The specially designed optics and the intelligent color mixing system, with a separate CTO channel system, will allow you to create spectacular light effects.

Features:

- RDM
- Selectable PWM rate by DMX
- Electronic 4.5° - 36° Zoom
- Pixel control by DMX / Artnet
- Battery powered touch display
- Speed and fade control for patterns







Infinity iW-740 RDM

41526 RGBW Wash, Electronic Zoom

The Infinity iW-340, iW-740 and iW-1240 wash lights are excellent additions to the Infinity Intelligent Light series for professional entertainment purposes. With a zoom range of 4.5° - 36°, these moving heads can be used both as a wash light and as a powerful LED beam.

The iW-740 RDM is the mid-sized fixture in this series and already capable of delivering an enormous output. Seven Osram 40W O-Star RGBW LEDs guarantee for bright and beautiful colors.

Individual pixels are controlled via DMX / Artnet or just select macro patterns to transform it into an exciting effect light. Built-in background LEDs add an additional layer to the already very extensive creative possibilities. The specially designed optics and the intelligent color mixing system, with a separate CTO channel system, will allow you to create spectacular light effects.

Features:

- RDM
- Selectable PWM rate by DMX
- Electronic 4.5° - 36° Zoom
- Pixel control by DMX / Artnet
- Battery powered touch display
- Speed and fade control for patterns





Features:

- RDM
- Selectable PWM rate by DMX
- Electronic 4.5° - 36° Zoom
- Pixel control by DMX / Artnet
- Battery powered touch display
- Speed and fade control for patterns

Infinity iW-1240 RDM

41527 RGBW Wash, Electronic Zoom

The Infinity iW-340, iW-740 and iW-1240 wash lights are excellent additions to the Infinity Intelligent Light series for professional entertainment purposes. With a zoom range of 4.5° - 36°, these moving heads can be used both as a wash light and as a powerful LED beam.

The iW-1240 RDM is the top-range fixture in this series and a real beast as far as its output is concerned. A great addition to the lighting needs of any mid-sized or large venue or stage. Just as its smaller siblings in this series, it is equipped 12 Osram 40W O-Star RGBW LEDs, which guarantee for bright and beautiful colors.

Individual pixels are controlled via DMX / Artnet or just select macro patterns to transform it into an exciting effect light. Built-in background LEDs add an additional layer to the already very extensive creative possibilities. The specially designed optics and the intelligent color mixing system, with a separate CTO channel system, will allow you to create spectacular light effects.







Infinity iW-720 RDM

41524 RGBW Wash, Electronic Zoom

The Infinity iW-720 RDM is a very compact and lightweight LED moving head, which makes this an ideal light effect for small to medium sized venues where space restrictions play a role. It also is a very quiet fixture, which makes it a great solution for theaters and studios too.

This wash light is equipped with seven 20W RGBW Osram LEDs, which offer a wide range of colors and superior color mixing with a seamless zoom function of 7 ° to 50 °. Compared to its predecessor (iW-720), this effect light is packed with improved electronics, allowing for highly accurate movements and consistent RDM data communication between the fixture and light console.

Other key features are the segment control of the LEDs, allowing four sections to be controlled individually for endless creative possibilities, and the microprocessor-controlled strobe and dimming functions, enabling smooth dimming as well as exciting strobe effects. High-speed motors for both pan and tilt ensure fast, yet very accurate movements.

Features:

- Motorized Zoom
- 4 Section control
- Ultra fast movement through high torque motors
- Battery powered menu



Infinity iW-1915 Pixel

41523 RGBW Wash, Zoom, Pixel control

The Infinity® iW-1915Pixel combines all benefits of the already popular iW-1915 with full pixel control, allowing boundless creativity for lightshows and multimedia experiences.

A clear high grade lens plate with excellent optics ensures a perfect color mix at any zoom position and can create stunning aura effects.

The wide linear zoom function, starting from 7° up to 50°, allows you to use the fixture either as beam effect or wash light. Also the iW-1915Pixel is equipped with high torque motors to ensure fast movements.

Features:

- Motorized Zoom
- Full Pixel Control
- Clear lens with background color effect
- Fast movement through high torque motors
- Selectable RGBW or CMY color mixing
- Artnet control



iW-340 RDM

41525 RGBW Wash, Electronic Zoom



Output:
Lux @ 3m: 14400
Beam Angle: 4.5° - 36°
Light Source: 3 x 40W RGBW (Osram Ostar)

Electrical:
Input voltage: 100-240VAC, 50/60Hz (auto ranging)
Power consumption: 140W

Control:
On Board: Battery powered full colour touch display with gravity sensor
Mode: DMX, Auto, Master/Slave
Control protocol: DMX-512, Artnet, RDM
Control personality: 21 / 27 / 28 channels
Wireless DMX: optional available

Optical system:
Dimmer: 0-100% 16 bit
Dimmer curves: Linear, Square, I-Square, S curve
Dimmer speed: Smooth, Fast
Colour balance: Separate RGBW adjustment
Colour mode: RGB / CMY
Strobe: 0-20Hz
Zoom: 4.5° - 36°, motorized

Movement:
Pan: 540°
Tilt: 270°
Pan/Tilt resolution: 16 bit
Special: Pan/Tilt change black out, User selectable Pan & Tilt ranges, 540°/360°/180°, Reverse Pan / Tilt movement.

Physical:
Colour: Black
Housing: Metal & Flame retardant plastic
Fixture connections: XLR 3&5p & RJ-45 Data in/out, PowerCON TRUE1 in/out
Dimensions (WxDxH): 263 x 199 x 348mm
Weight: 6.2Kg

Certification and Safety:
Certification: CE
Max. ambient temp: 45°

iW-740 RDM

41526 RGBW Wash, Electronic Zoom



Output:
Lux @ 3m: 35556
Beam Angle: 4.5° - 36°
Light Source: 7 x 40W RGBW (Osram Ostar)

Electrical:
Input voltage: 100-240VAC, 50/60Hz (auto ranging)
Power consumption: 300W

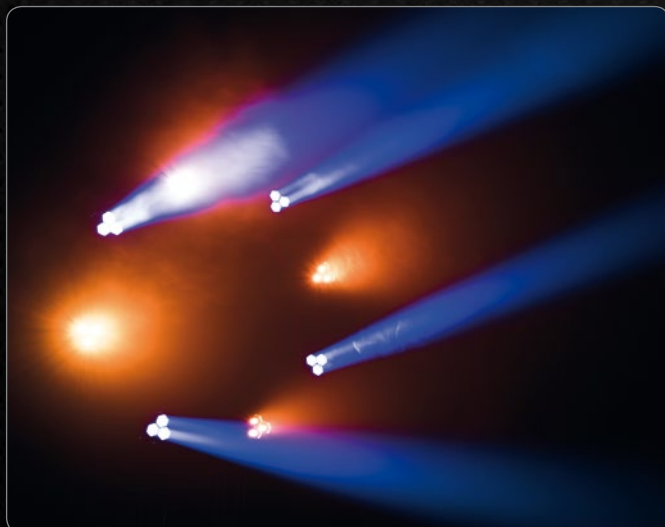
Control:
On Board: Battery powered full colour display including gravity sensor
Mode: DMX, Auto, Master/Slave
Control protocol: DMX-512, Artnet, RDM
Control personality: 21 / 28 / 43 channels
Wireless DMX: optional available

Optical system:
Dimmer: 0-100% 16 bit
Dimmer curves: Linear, Square, I-Square, S curve
Dimmer speed: Smooth, Fast
Colour balance: Separate RGBW adjustment
Colour mode: RGB / CMY
Strobe: 0-20Hz
Zoom: 4.5° - 36°, motorized

Movement:
Pan: 540°
Tilt: 270°
Pan/Tilt resolution: 16 bit
Special: Pan/Tilt change black out, User selectable Pan & Tilt ranges, 540°/360°/180°, Reverse Pan / Tilt movement.

Physical:
Colour: Black
Housing: Metal & Flame retardant plastic
Fixture connections: XLR 3&5p & RJ-45 Data in/out, PowerCON TRUE1 in/out
Dimensions (WxDxH): 345 x 274 x 412mm
Weight: 9.3Kg

Certification and Safety:
Certification: CE
Max. ambient temp: 45°

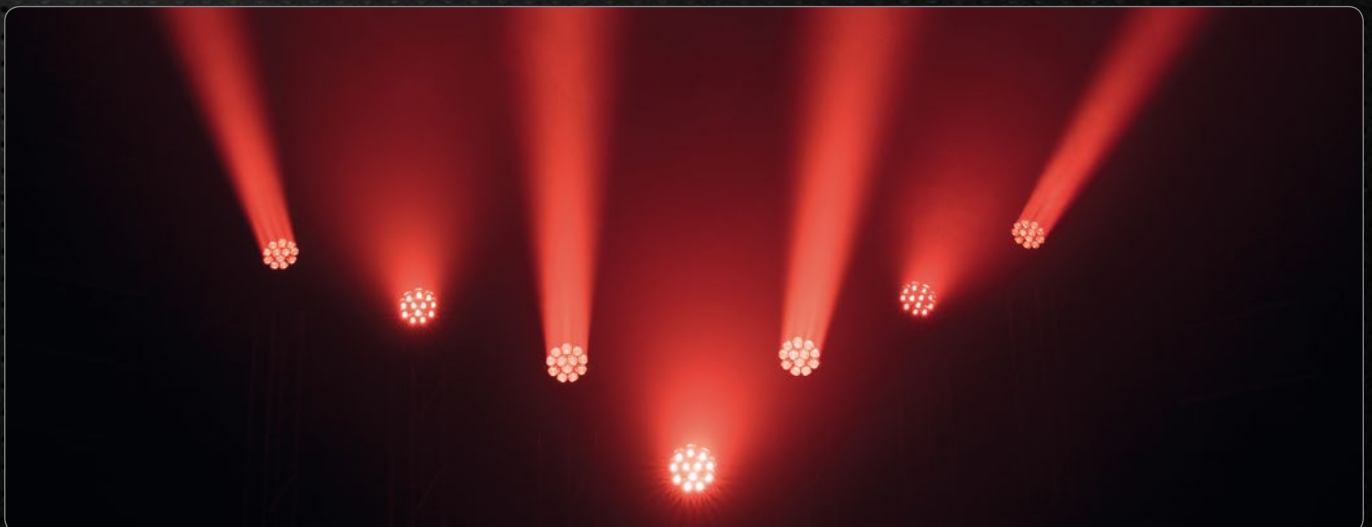


IW-1240 RDM

41527 RGBW Wash, Electronic Zoom



Output:	
Lux @ 3m:	55555
Beam Angle:	4.5° - 36°
Light Source:	12 x 40W RGBW (Osram Ostar)
Electrical:	
Input voltage:	100-240VAC, 50/60Hz (auto ranging)
Power consumption:	460W
Control:	
On Board:	Battery powered full colour display including gravity sensor
Mode:	DMX, Auto, Master/Slave
Control protocol:	DMX-512, Artnet, RDM
Control personality:	21 / 28 / 63 channels
Wireless DMX:	optional available
Optical system:	
Dimmer:	0-100% 16 bit
Dimmer curves:	Linear, Square, I-Square, S curve
Dimmer speed:	Smooth, Fast
Colour balance:	Separate RGBW adjustment
Colour mode:	RGB / CMY
Strobe:	0-20Hz
Zoom:	4.5° - 36°, motorized
Movement:	
Pan:	540°
Tilt:	270°
Pan/Tilt resolution:	16 bit
Special:	Pan/Tilt change black out, User selectable Pan & Tilt ranges, 540°/360°/180°, Reverse Pan / Tilt movement.
Physical:	
Colour:	Black
Housing:	Metal & Flame retardant plastic
Fixture connections:	XLR 3&5p & RJ-45 Data in/out, PowerCON TRUE1 in/out
Dimensions (WxDxH):	388 x 274 x 493mm
Weight:	12.5Kg
Certification and Safety:	
Certification:	CE
Max. ambient temp:	45°



iW-720 RDM

41524 RGBW Wash, Electronic Zoom



Output
Lux @ 3m: 13800
Beam Angle: 7-50°
Light Source: 7x 20W RGBW 4-in-1 LED (Osram)

Electrical
Input Voltage: 100-240VAC, 50/60Hz
Power consumption: 190W max. at full output

Control
On-Board: Battery powered full color display including gravity sensor
Battery lifetime: max 30 days (full charge)
Mode: DMX, RDM, Auto & Master/Slave
Control Protocol: DMX512
Control Personality: Advanced 29ch /Basic 16ch, 14ch
Wireless DMX: optional available

Optical system
Dimmer: 0-100%
Dimmer curves: Linear, Square, I-Square, S curve
Dimmer speed: Smooth, fast
Color balance: Separate RGBW adjustment
Strobe: 0-20Hz
Zoom: Motorized

Movement
Pan: 540°
Tilt: 270°
Pan/Tilt resolution: 16 bit
Special: Pan/ Tilt, change blackout, User-selectable Pan & Tilt ranges, 540°/360°/180°. Reverse Pan / Tilt movement

Physical
Color: Black
Housing: Metal & Flame-retardant plastic
Fixture Connection: XLR 3p Data in/out, Powercon in- & output
Dimensions (WxDxH): 204 x 219 x 380 mm
Weight: 8Kg

Certification and Safety
Certification: CE
Max. ambient Temp.: 40°C

iW-1915

41522 RGBW Wash, Electronic Zoom



Output
Lux @ 2m: 36600
Beam Angle: 7-50°
Light Source: 19x 15W RGBW 4-in-1 LED (LED Engin)

Electrical
Input Voltage: 100-240VAC, 50/60Hz
Power consumption: 415W max. at full output

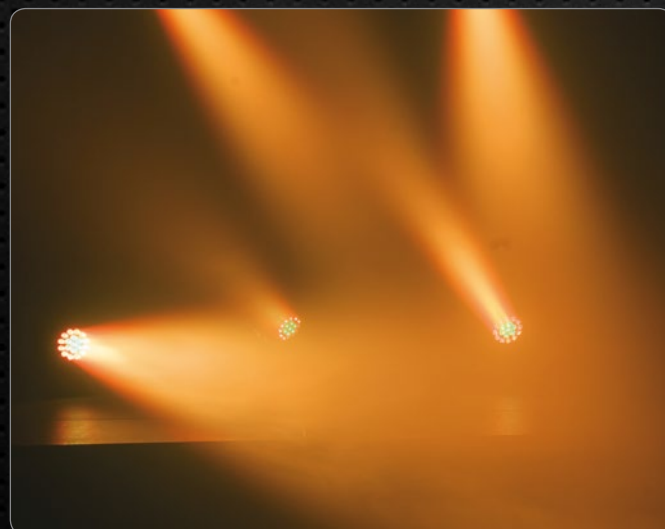
Control
On-Board: Battery powered full color display including gravity sensor
Battery lifetime: max 30 days (full charge)
Mode: DMX, Auto & Master/Slave
Control Protocol: DMX512
Control Personality: 34ch, 16ch & 14ch
Wireless DMX: optional available

Optical system
Dimmer: 0-100%
Dimmer curves: Linear, Square, I-Square, S curve
Dimmer speed: Smooth, fast
Color balance: Separate RGBW adjustment
Strobe: 0-20Hz
Zoom: Motorized

Movement
Pan: 540°
Tilt: 270°
Pan/Tilt resolution: 16 bit
Special: Pan/ Tilt, change blackout, User-selectable Pan & Tilt ranges, 540°/360°/180°. Reverse Pan / Tilt movement

Physical
Color: Black
Housing: Metal & Flame-retardant plastic
Fixture Connection: XLR 3&5p Data in/out, Powercon in- & output
Dimensions (WxDxH): 303 x 366 x 427 mm
Weight: 14Kg

Certification and Safety
Certification: CE
Max. ambient Temp.: 40°C



iW-1915 Pixel

41523 RGBW Wash, Zoom, Pixel control



Output:	36600
Lux @ 2m:	7° - 50°
Beam Angle:	Osram Ostar 19x15W RGBW 4-in-1
Light Source:	
Electrical:	
Input voltage:	100-240VAC, 50/60Hz
Power consumption:	415W at full output
Control:	
On Board:	Battery powered full color display including gravity sensor
Mode:	DMX, Auto, Master/Slave
Control protocol:	DMX-512, Artnet
Control personality:	Advanced 97 ch / Basic 21ch
Wireless DMX:	optional available
Selectable PWM:	600Hz, 1200Hz, 2000Hz, 4000Hz, 6000Hz, 15000Hz.
Optical system:	
Dimmer:	0-100%
Dimmer curves:	Linear, Square, I-Square, S curve
Dimmer speed:	Smooth, Fast
Color balance:	Separate RGBW adjustment
Strobe 0-20Hz	
Zoom:	7° - 50°, motorized
Movement:	
Pan:	540°
Tilt:	270°
Pan/Tilt resolution:	16 bit
Special:	Pan/Tilt change black out, User selectable Pan & Tilt ranges, 540°/360°/180°, Reverse Pan / Tilt movement.
Physical:	
Color:	Black
Housing:	Metal & Flame retardant plastic
Fixture connections:	XLR 3&5p & RJ-45 Data in/out, Powercon in- output
Dimensions:	303 x 366 x 427mm
Weight:	14Kg
Certification and Safety:	
Certification:	CE
Max. ambient temp:	40°



Infinity iB-715

41540 RGBW Beam



The Infinity® iB-715 offers extreme freedom by its continuous rotating possibilities on both pan and tilt; where high torque motors allow for very fast movements as well.

Its light output is enormous because of the Osram O-Star RGBW LED's in combination with the newly developed high grade optical system at a beam angle of just 4.5°.

All LEDs can be controlled individually, offering separate color adjustment for creative and dramatic effects in any venue.

Features:

- 4.5° high grade optics
- Osram O-star RGBW LED
- Continuous Pan & Tilt rotating
- Ultra fast movement through high torque motors
- Selectable RGBW or CMY color mixing







Infinity iB-2R

41531 2R Beam, incl. Osram lamp

Razor-sharp beams, vivid colors, fast movements, professional functions, these are the key features of the Infinity® iB-2R.

The iB-2R is equipped with an Osram Sirius HRI 132W lamp (2R), an 8-facet rotating prism as well a linear rotating prism. These prisms can be overlapped to create brilliant effects.

Furthermore it has an ultra-fast gobo- and color wheel. Eighteen dedicated beam gobos and 14 rich and vivid dichroic filters to get your desired effect for any venue.

Features:

- 8 Facet & Linear prism
- Color-bump possibility
- Fast movement through high torque motors
- Battery powered menu



Infinity iB-5R

41530 5R Beam, incl. Osram lamp



Fully packed with features for the most demanding beam-effect user, the Infinity® iB-5R offers you all functions you require.

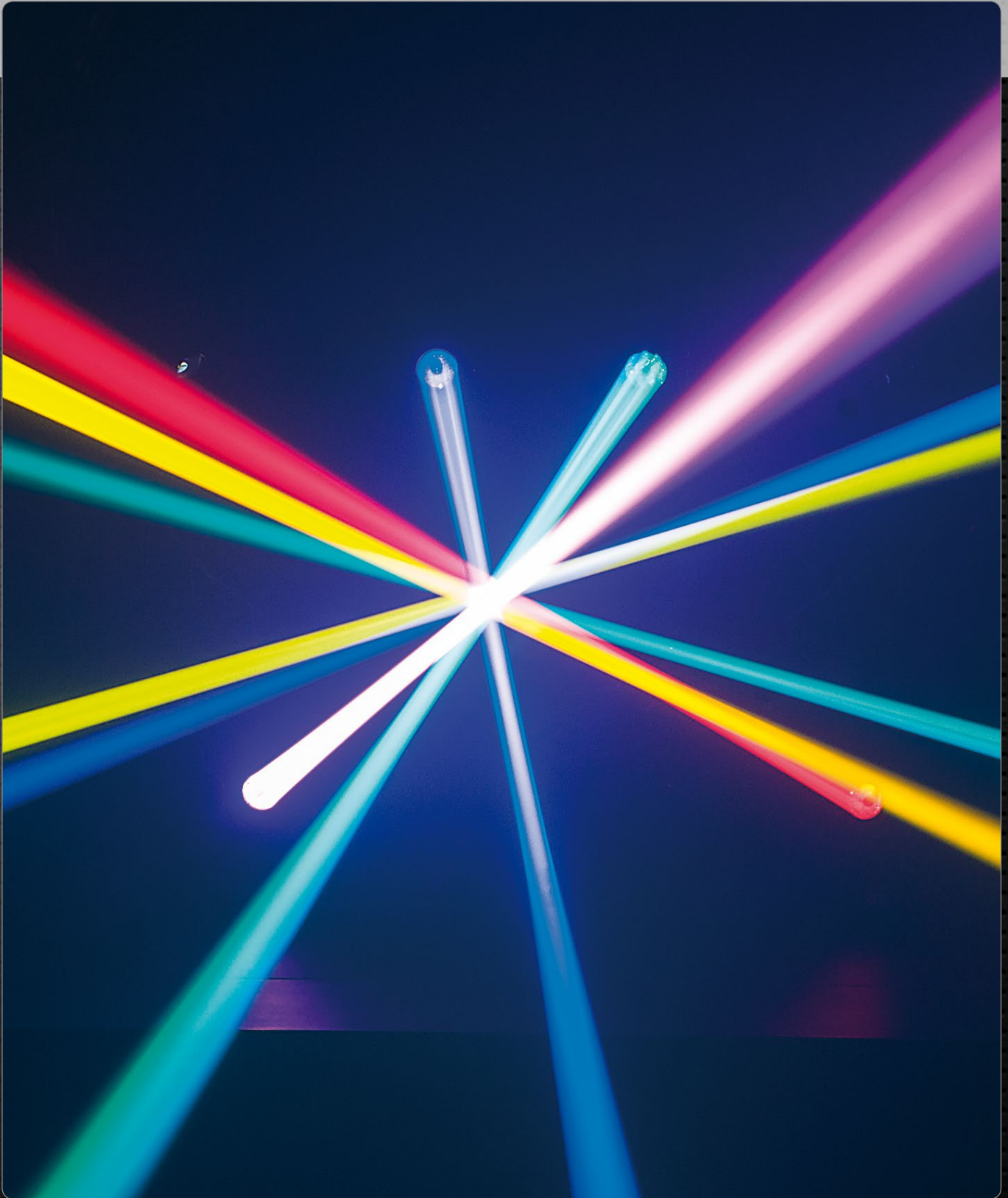
The Infinity iB-5R has fast movements for pan/tilt, gobo and color changes, and offers 17 metal gobos in combination with 14 vivid colors.

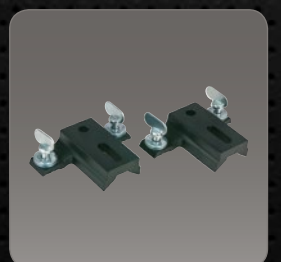
Furthermore the iB-5R is equipped with an 8-facet prism with zoom function and frost filter as well as a powerful light source: the Osram Sirius HRI 230W lamp (5R).

Features:

- 8 Facet prism with zoom
- Color-bump possibility
- Frost filter
- Fast movement through high torque motors
- Battery powered menu







Infinity iB-16R Hybrid

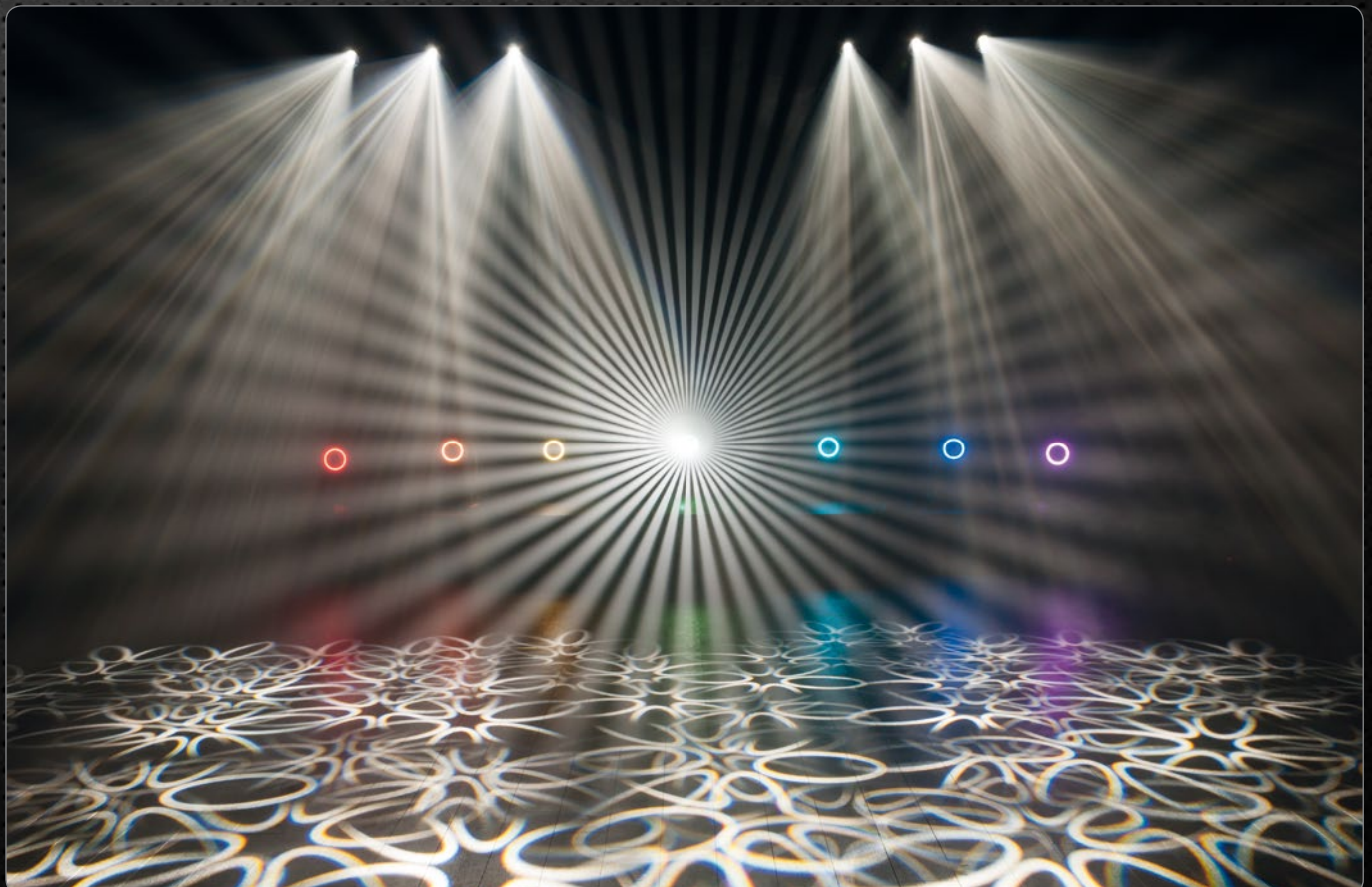
41532 16R Beam, incl. Osram lamp

The Infinity® iB-16R is a truly versatile moving head offering a beam, spot and wash effect in one. The fixture delivers an extreme output of 111.000 Lux @ 15m through the powerful Osram Sirius 330W X8 lamp with an extremely tight beam angle of 1-4.5° in beam mode and 5-19° in spot mode.

It offers two prisms (5 facet linear, and 8 facet) which can be overlaid and are rotatable in both directions. Furthermore it is equipped with 2 gobo wheels offering flow- and shake effects and a 13+ white color wheel. This all makes the Infinity® iB-16R to the ultimate tool for the most demanding lighting professional.

Features:

- 111.000 Lux @ 15 meter
- Two prisms with overlay effect
- 2.5° to 8° zoom in beam mode, 5° to 19° zoom in spot mode for variable beam size options
- Two gobo wheels, 1 rotating and 1 static
- Auto-Focus function



iB-715

41540 RGBW Beam



Output:
Lumen: 3200
Beam Angle: 4.5°
Light Source: Osram Ostar 7x15W RGBW 4-in-1

Electrical:
Input voltage: 100-240VAC, 50/60Hz
Power consumption: 150W at full output

Control:
On Board: Battery powered full color display including gravity sensor
Mode: DMX, Auto, Master/Slave
Control protocol: DMX-512
Control personality: Advanced 51 ch / Basic 23 ch optional available
Wireless DMX:

Optical system:
Dimmer: 0-100%
Dimmer curves: Linear, Square, I-Square, S curve
Dimmer speed: Smooth, Fast
Color balance: Separate RGBW adjustment
Strobe 0-20Hz

Movement:
Pan: 540° and continuous
Tilt: 270° and continuous
Pan/Tilt resolution: 16 bit
Special: Pan/Tilt change black out, User selectable Pan & Tilt ranges, 540°/360°/180°, Reverse Pan / Tilt movement.

Physical:
Color: Black
Housing: Metal & Flame retardant plastic
Fixture connections: XLR 3p Data in/out, Powercon in- output
Dimensions: 219 x 308 x 404mm
Weight: 9Kg

Certification and Safety:
Certification: CE
Max. ambient temp: 40°

iB-2R

41531 2R Beam, incl. Osram lamp



Lamp
Light Source: Osram Sirius HRI 132W (2R)
Lamp socket: E19
Color temp.: 9200K
Beam angle: 3°

Electrical
Input Voltage: 100-240 VAC
Power consumption: 265W

Control
On-Board: Battery powered full color display including gravity sensor
Battery lifetime: max 30 days (full charge)
Mode: DMX, Auto & Master/Slave
Control Protocol: DMX512
Control Personality: Advanced 19ch /Basic 15ch optional available
Wireless DMX:

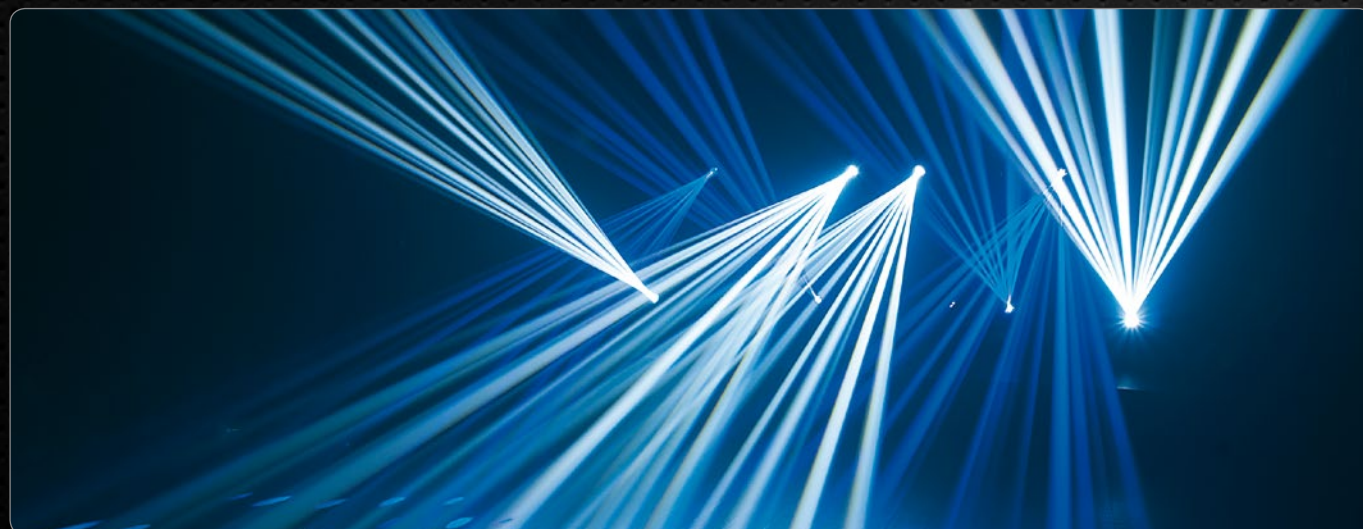
Optical system
Dimmer: 0-100% Mechanical
Shutter: 0-20Hz
Focus: Motorized
Prism 1: 8-facet rotating prism
Prism 2: Linear rotating
Frost: No

Movement
Pan: 540°
Tilt: 270°
Pan/Tilt resolution: 16 bit
Special: Pan/ Tilt, Color,Gobo change blackout, User-selectable Pan & Tilt ranges, 540°/360°/180°/90°, Reverse Pan / Tilt movement

Gobos & Colors
Gobowheel: 17 Metal gobos
Gobo functions: Gobo-flow effect, Gobo shake
Colors: 14 dichroic-filters + white
Color functions: Split colors, Rainbow-flow effect

Physical
Color: Black
Housing: Metal & Flame-retardant plastic
Screws: Quick lock
Fixture Connection: XLR 3&5p Data in/out, Powercon input
Dimensions (WxDxH): 303 x 366 x 475mm
Weight: 17,5 kg

Certification and Safety
Certification: CE
Max. ambient Temp.: 40°C
Minimum distance objects: 6,5m



iB-5R

41530 5R Beam, incl. Osram lamp



Lamp
 Light Source: Osram Sirius HRI 230W (5R)
 Lamp socket: E20.6
 Color temp.: 8000K
 Beam angle: 1- 3,8°

Electrical
 Input Voltage: 100-240 VAC
 Power consumption: 385W

Control
 On-Board: Battery powered full color display including gravity sensor
 Battery lifetime: max 30 days (full charge)
 Mode: DMX, Auto & Master/Slave
 Control Protocol: DMX512
 Control Personality: Advanced 18ch / Basic 15ch
 Wireless DMX: optional available

Optical system
 Dimmer: 0-100% Mechanical
 Shutter: 0-20Hz
 Focus: Motorized
 Prism 1: 8-facet rotating prism
 Frost: Yes

Movement
 Pan: 540°
 Tilt: 270°
 Pan/Tilt resolution: 16 bit
 Special: Pan/ Tilt, Color,Gobo change blackout,User-selectable Pan & Tilt ranges, 540°/360°/180°/90°. Reverse Pan / Tilt movement

Gobos & Colors
 Gobowheel: 17 Metal gobos
 Gobo functions: Gobo-flow effect,Gobo shake
 Colors: 14 dichroic-filters + white
 Color functions: Split colors, Rainbow-flow effect

Physical
 Color: Black
 Housing: Metal & Flame-retardant plastic
 Screws: Quick lock
 Fixture Connection: XLR 3&5p Data in/out, Powercon input
 Dimensions (WxDxH): 346 x 417 x 490 mm
 Weight: 20,5 kg

Certification and Safety
 Certification: CE
 Max. ambient Temp.: 40°C
 Minimum distance objects: 12m

iB-16R Hybrid

41532 16R Beam, incl. Osram lamp



Lamp:
 Light Source: Osram Sirius, 330W, X8, 7500K
 Lamp Socket: E20.6
 Beam Angle: 1° to 4,5° (Beam Mode)
 3° to 10° (Spot Mode)
 2.5° to 8° (Beam Mode)
 5° to 19° (Spot Mode)

Field Angle:

Electrical:
 Input voltage: 100 to 240V AC 50/60Hz (auto-ranging)
 Powerconsumption: 522W

Control:
 On-Board: Battery powered full color display including gravity sensor
 Mode: DMX, Auto, Master/Slave
 Control protocol: DMX-512
 Control personality: Advanced 31ch / Basic 26ch
 Wireless DMX: optional available

Optical system:
 Dimmer: 0-100% Mechanical
 Strobe: 0-20Hz
 Focus: Motorized
 Zoom: 2.5° to 8° (Beam Mode)
 5° to 19° (Spot Mode)
 Prism 1: 8 facet rotating prism
 Prism 2: 5 facet linear rotating prism
 Frost: Yes

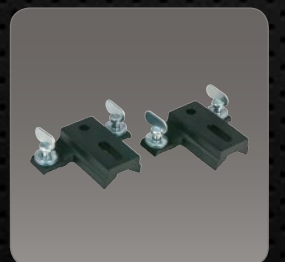
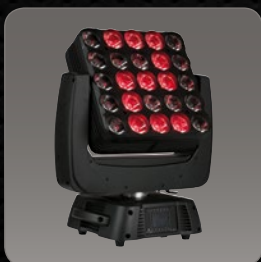
Movement:
 Pan: 540°
 Tilt: 260°
 Pan/Tilt resolution: 16 bit
 Special: Pan/Tilt, Color/Gobo change blackout, User-selectable Pan & Tilt ranges, 540°/360°/180°/90°, Reverse Pan / Tilt movement.

Gobos & Colors
 Gobo wheel 1: 9 + open (9 glass), rotating, interchangeable, indexing, slot-n-lock
 Gobo wheel 2: 14 + open (14 metal), continuous scroll at variable speed.
 Gobo function: Gobo-flow effect, Gobo shake.
 Colors: 13 + white, split colors, continuous scroll at variable speeds
 Color effect: Split-colors, Rainbow-flow effect

Physical:
 Color: Black
 Housing: Metal & Flame retardant plastic
 Screw: Quick lock
 Fixture connection: XLR 3&5p Data in/out, Powercon input
 Dimensions: 410 x 327 x 638mm
 Weight: 25,1kg

Certification and Safety:
 Certification: CE
 Max Ambient temp.: 45°
 Minimum distance objects: 23m





Infinity iM-2515

41560 RGBW Matrix

The Infinity® iM-2515, 5x5 Matrix, is an absolute highlight within this flagship series and should be part of any professional show!

This fully pixel controllable matrix fixture, with continuous rotating on both pan and tilt, offers endless creative possibilities to lighting designers.

25 Osram O-Star 15W RGBW LEDs, combined with high-grade optics, will guarantee a palette of beautiful colors and a high light output. High torque motors ensure fast movements and at a beam angle of just 4.5°, its beams are solid and precise.

Whether you want to create dynamic effects, breath-taking visuals or perfect solid beams, the Infinity® iM-2515 is the fixture that will help you achieve it all!

Features:

- 4.5° high grade optics
- Full Pixel control
- Continuous Pan & Tilt rotating
- 5x5 RGBW Matrix
- Selectable RGBW or CMY color mixing
- Combined Artnet & DMX control



Infinity iFX-615

41551 Continuous rotating RGBW Bar



The Infinity® iFX-615 is a moving batten with 2 individual moving sections; continuous rotation on both X- and Y-axis, and 2 separate LED sections (3 LEDs each) with a movement of 15° in both directions.

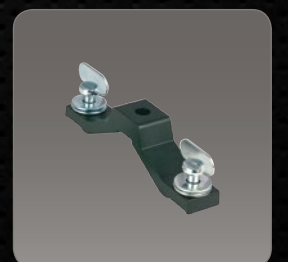
With this additional movement in both directions and pixel control, it is possible to create stunning beam and sweep effects. Its six 67mm 4,5° lenses with 15W RGBW LEDs provide the exact same output and optics as the iM-2515 and iB-715.

The infinity iFX-615 gives light designers a new tool to lift their show to a higher level.

Features:

- Continuous Pan & Tilt movement
- Additional double Y-Axis movements
- Fast movement through high torque motors
- Pixel control
- RGBW & CMY Color mode





iM-2515

41560 RGBW Matrix



Output:
Lumen: 11.700
Beam Angle: 4.5°
Light Source: Osram Ostar 25x15W RGBW 4-in-1

Electrical:
Input voltage: 100-240VAC, 50/60Hz
Power consumption: 450W at full output

Control:
On Board: Battery powered full color display including gravity sensor
Mode: DMX, Auto, Master/Slave
Control protocol: DMX-512, Artnet
Control personality: Advanced 123 ch / Basic 23ch / Artnet+Dmx 100+15 optional available
Wireless DMX:

Optical system:
Dimmer: 0-100%
Dimmer curves: Linear, Square, I-Square, S curve
Dimmer speed: Smooth, Fast
Color balance: Separate RGBW adjustment
Strobe: 0-20Hz

Movement:
Pan: 540° and continuous
Tilt: 270° and continuous
Pan/Tilt resolution: 16 bit
Special: Pan/Tilt change black out, User selectable Pan & Tilt ranges, 540°/360°/180°, Reverse Pan / Tilt movement.

Physical:
Color: Black
Housing: Metal & Flame retardant plastic
Fixture connections: XLR 3&5p Data in/out, Powercon in- output
Dimensions: 366 x 485 x 586 mm
Weight: 20 kg

Certification and Safety:
Certification: CE
Max. ambient temp: 40°

iFX-615

41551 Continuous rotating RGBW Bar



Output:
Lumen: 440 lm per pixel
Beam Angle: 4.5°
Light Source: Osram Ostar 6x15W RGBW 4-in-1

Electrical:
Input voltage: 100-240VAC, 50/60Hz
Power consumption: 250W at full output

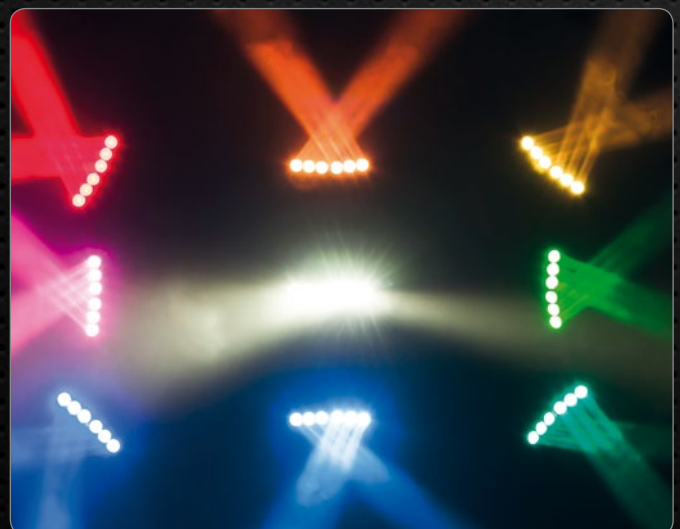
Control:
On Board: Battery powered full color display including gravity sensor
Mode: DMX, Auto, Master/Slave
Control protocol: DMX-512
Control personality: Advanced 49 ch / Basic 25ch optional available
Wireless DMX:

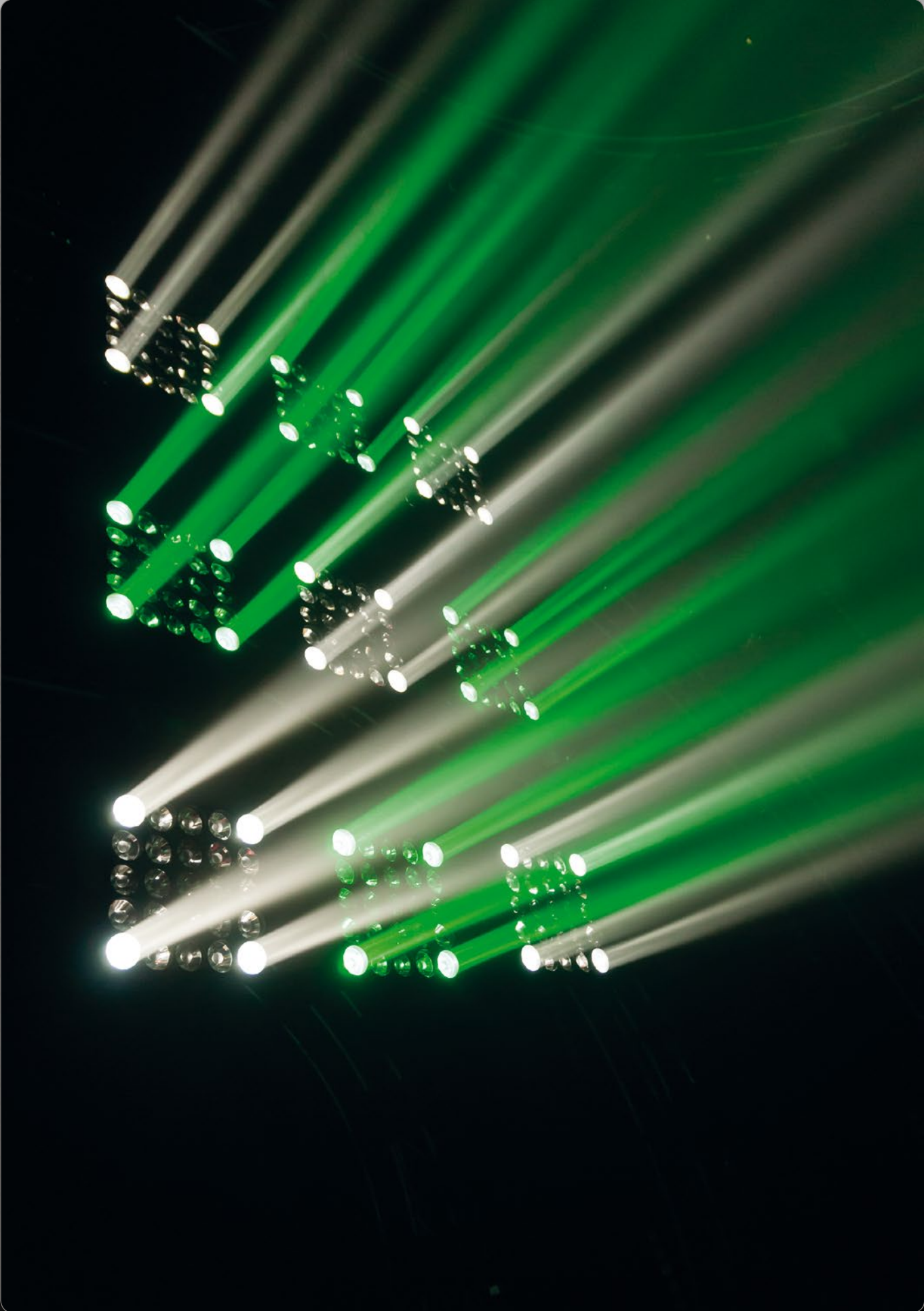
Optical system:
Dimmer: 0-100%
Dimmer curves: Linear, Square, I-Square, S curve
Dimmer speed: Smooth, Fast
Color balance: Separate RGBW adjustment
Strobe: 0-20Hz

Movement:
Pan: 540° and continuous
Tilt: 270° and continuous
Y-axis 1&2: -15° / + 15°
Pan/Tilt resolution: 16 bit
Special: Pan/Tilt change black out, User selectable Pan & Tilt ranges, 540°/360°/180°, Reverse Pan / Tilt movement

Physical:
Color: Black
Housing: Metal & Flame retardant plastic
Data connections: XLR 3p in/out
Power connections: Powercon in- output
Dimensions: 600 x 203 x 310 mm
Weight: 10kg

Certification and Safety:
Certification: CE
Max. ambient temp: 40°





Infinity Moving head Series

Wireless DMX Upgrade-modules

The Wireless DMX Upgrade is an upgrade set which includes all the necessary components for receiving wireless DMX in a 2,4 GHz band, compatible with our Wireless Solutions DMX Transmitters.

The update is available in 2 versions: either with an external antenna or a built-in antenna. The internal antenna version is designed for maximum user friendliness whereas the external antenna is optimized for a wide wireless range(*).

The receiver must be linked and unlinked by the transmitter in order to communicate. It is possible to link multiple receivers to one transmitter. The presence of the wireless communication is indicated by the blinking data symbol in the display.

(*) In order to prevent damage to the external antenna connector, it is recommended to detach the antenna before placing the moving head onto a flat surface.

WIRELESS SOLUTION
MADE IN SWEDEN



Wireless DMX upgrade kit	External Antenna	Internal Antenna
iS-100	MOD41500	MOD41500IA
iS-200	MOD41501	MOD41501IA
iS-250	MOD41502	MOD41502IA
iS-400	MOD41504	MOD41504IA
iW-340 RDM		MOD41525IA
iW-740 RDM		MOD41526IA
iW-1240 RDM		MOD41527IA
iW-720 RDM	MOD41521	MOD41521IA
iW-1915	MOD41522	MOD41522IA
iW-1915 Pixel	MOD41523	MOD41523IA
iB-715	MOD41540	MOD41540IA
iB-2R	MOD41531	MOD41531IA
iB-5R	MOD41530	MOD41530IA
iB-16R Hybrid	MOD41532	MOD41532IA
iM-2515	MOD41560	MOD41560IA
iFX-615	MOD41551	MOD41551IA





intelligent light solutions

This is a Highlite International B.V. publication. Design, concept, artwork, text and pictures are copyright protected and may not be reproduced in any form without prior approval of Highlite International B.V. in the Netherlands. Information in this catalogue is subject to change.

Highlite International B.V. has the right to refuse claims based on misprints or editorial-errors.
Concept, art & design: Graphic-design department Highlite International B.V. All rights reserved 2019 ©
Infinity © is a registered trademark of Highlite International B.V.

www.infinity-intelligent-light.com

Infinity-products are exclusively distributed by

Highlite International B.V.

Vestastraat 2, 6468EX Kerkrade, The Netherlands

infinity@highlite.com - export@highlite.com

Phone: +31-(0)45 - 5667700

